

OFA Registry Summary by Report Year

AMERICAN PIT BULL TERRIER

Percentage of cases where owners have chosen to make all results public after 2001

Clicking these labels will link to the OFA website detail for that data

	Year	Cases	Normal	Abnormal	Excellent	Good	Fair	Borderline	Mild	Moderate	Severe
Hips	1985	3	2			1 33.3	1 33.3	1 33.3			
	1986	15	15			10 66.7	5 33.3				
	1987	10	7	3 30.0		7 70.0			1 10.0	2 20.0	
	1988	6	5	1 16.7		2 33.3	3 50.0				1 16.7
	1989	6	6			4 66.7	2 33.3				
	1990	5	5		2 40.0	2 40.0	1 20.0				
	1991	7	3	4 57.1		1 14.3	2 28.6		2 28.6		2 28.6
	1992	5	4	1 20.0		2 40.0	2 40.0		1 20.0		
	1993	8	7	1 12.5	1 12.5	5 62.5	1 12.5				1 12.5
	1994	18	13	4 22.2	1 5.6	9 50.0	3 16.7	1 5.6	3 16.7		1 5.6
	1995	11	8	2 18.2	2 18.2	4 36.4	2 18.2	1 9.1	2 18.2		
	1996	17	11	5 29.4		9 52.9	2 11.8	1 5.9	4 23.5		1 5.9
	1997	21	17	4 19.1	2 9.5	12 57.1	3 14.3		3 14.3		1 4.8
	1998	25	16	6 24.0	1 4.0	11 44.0	4 16.0	3 12.0	4 16.0		2 8.0
	1999	23	18	5 21.7	1 4.4	12 52.2	5 21.7		4 17.4		1 4.4
	2000	40	33	7 17.5	4 10.0	21 52.5	8 20.0		5 12.5		2 5.0
2001	47 12.8	35	10 21.3	1 2.1	22 46.8	12 25.5	2 4.3	6 12.8		4 8.5	

OFA Registry Summary by Report Year

AMERICAN PIT BULL TERRIER

Percentage of cases where owners have chosen to make all results public after 2001

Clicking these labels will link to the OFA website detail for that data

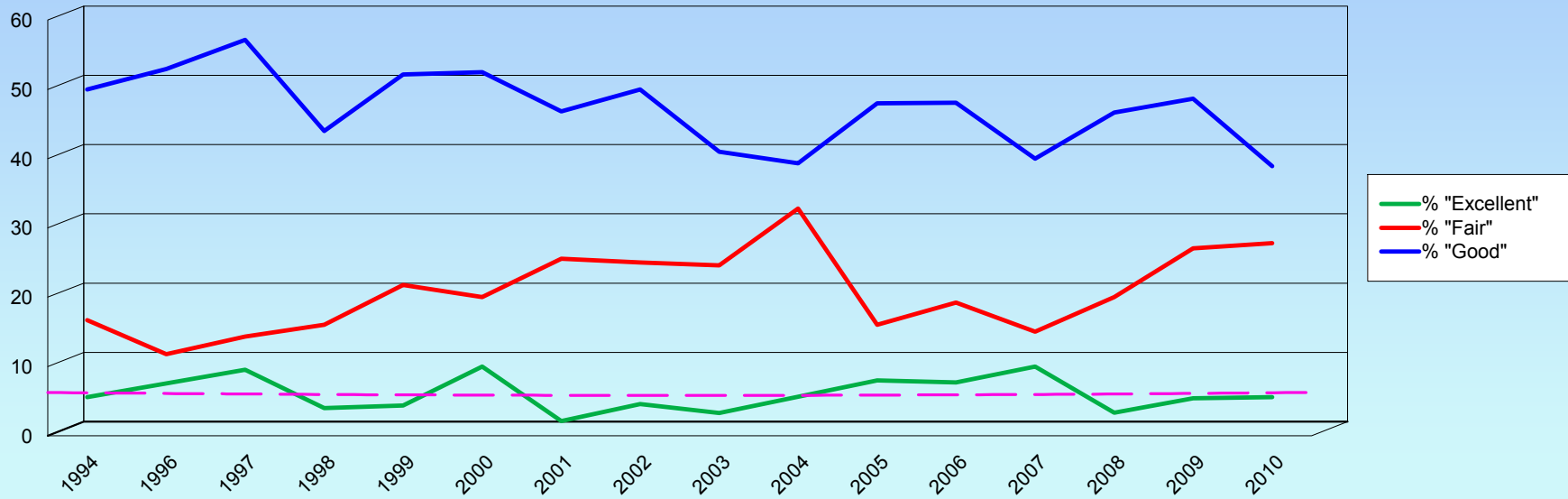
	Year	Cases	Normal	Abnormal	Excellent	Good	Fair	Borderline	Mild	Moderate	Severe
Hips	2002	44 11.4	35	7 15.9	2 4.6	22 50.0	11 25.0	2 4.6	6 13.6	1 2.3	
	2003	61 6.6	42	18 29.5	2 3.3	25 41.0	15 24.6	1 1.6	12 19.7	4 6.6	2 3.3
	2004	61 24.6	44	16 26.2		24 39.3	20 32.8	1 1.6	14 23.0	2 3.3	
	2005	50 24.0	36	13 26.0	4 8.0	24 48.0	8 16.0	1 2.0	10 20.0	3 6.0	
	2006	52 21.2	39	13 25.0	4 7.7	25 48.1	10 19.2		12 23.1	1 1.9	
	2007	60 25.0	39	21 35.0	6 10.0	24 40.0	9 15.0		14 23.3	7 11.7	
	2008	30 13.3	21	8 26.7	1 3.3	14 46.7	6 20.0	1 3.3	6 20.0	2 6.7	
	2009	37 21.6	30	7 18.9	2 5.4	18 48.7	10 27.0		6 16.2		1 2.7
	2010	18 11.1	13	5 27.8	1 5.6	7 38.9	5 27.8		3 16.7	2 11.1	
	Totals	680	504	161 23.7	37 5.4	317 46.6	150 22.1	15 2.2	118 17.4	40 5.9	3 0.4

OFA Registry Summary by Report Year

AMERICAN PIT BULL TERRIER

Distribution of normal hip readings by report year

Trend of "Excellent"



OFA Registry Summary by Report Year

AMERICAN PIT BULL TERRIER

YEAR	All Cases	Elbows AMERICAN PIT BULL TERRIER					
		Normal	Abnormal	Borderline	Grade 1 dysplasia	Grade 2	Grade 3
1990	1	1					
		100.0					
1992	1	1					
		100.0					
1995	2	2					
		100.0					
1998	3	3					
		100.0					
1999	2	2					
		100.0					
2000	4	4					
		100.0					
2001	13	10	3		2		1
		76.9	23.1		66.7		33.3
2002	6	5	1		1		
		83.3	16.7		100.0		
2003	22	20	2		2		
		90.9	9.1		100.0		
2004	24	20	4		3	1	
		83.3	16.7		75.0	25.0	
2005	28	23	5		4	1	
		82.1	17.9		80.0	20.0	
2006	32	30	2		2		
		93.8	6.3		100.0		
2007	28	24	4		3	1	
		85.7	14.3		75.0	25.0	
2008	20	15	5		4		1
		75.0	25.0		80.0		20.0
2009	18	15	3		2	1	
		83.3	16.7		66.7	33.3	
2010	13	10	3		2	1	
		76.9	23.1		66.7	33.3	
Totals	217	185	32		25	5	2
		85.3	14.8		78.1	15.6	6.3

OFA Registry Summary by Report Year

AMERICAN PIT BULL TERRIER

Cardiac **AMERICAN PIT BULL TERRIER**

Year	All cases	Normal	Abnormal	Equival
2002	2	2 100.0		
2003	14	13 92.9		1 7.1
2004	59	58 98.3	1 1.7	
2005	66	62 93.9		4 6.1
2006	47	47 100.0		
2007	46	45 97.8		1 2.2
2008	37	36 97.3		1 2.7
2009	31	31 100.0		
2010	12	12 100.0		
Totals	314	306 97.5	1 0.3	7 2.2

OFA Registry Summary by Report Year

AMERICAN PIT BULL TERRIER

Year	Thyroid		AMERICAN PIT BULL TERRIER			
	All Cases	Normal	Abnormal	Autoimmune thyroiditis	Idiopathic Hypothyroidism	Equivocal
1998	1	1				
		100.0				
2002	1		1	1		
			100.0	100.0		
2003	5	4				1
		80.0				20.0
2004	26	21	3	3		2
		80.8	11.5	11.5		7.7
2006	22	17	2	2		3
		77.3	9.1	9.1		13.6
2007	12	12				
		100.0				
2008	9	7	1	1		1
		77.8	11.1	11.1		11.1
2009	3	3				
		100.0				
2010	3	3				
		100.0				
Totals	82	68	7	7		7
		82.9	8.5	8.5		8.5

OFA Registry Summary by Report Year

AMERICAN PIT BULL TERRIER

Patella

AMERICAN PIT BULL TERRIER

Year All Cases Normal Abnormal

1998	1		1
			100.0
2000	2	2	
		100.0	
2001	1	1	
		100.0	
2002	2	2	
		100.0	
2003	16	16	
		100.0	
2004	44	44	
		100.0	
2005	27	27	
		100.0	
2006	30	30	
		100.0	
2007	26	26	
		100.0	
2008	26	26	
		100.0	
2009	18	18	
		100.0	
2010	9	8	1
		88.9	11.1
Totals	202	200	2
		99.0	1.0

OFA Registry Summary by Report Year

AMERICAN PIT BULL TERRIER

Baer Hearing

AMERICAN PIT BULL TERRIER

Year

All Cases

Normal

Abnormal

2005

1

1

100.0

2008

1

1

100.0

Totals

2

2

100.0

OFA Registry Summary by Report Year

AMERICAN PIT BULL TERRIER

Spine

AMERICAN PIT BULL TERRIER

	All Cases	Normal	Abnormal
1994	1		1
			100.0
2000	1		1
			100.0
Totals	2		2
			100.0