

# OFA Registry Summary by Report Year

## BLACK AND TAN COONHOUND

Percentage of cases where owners have chosen to make all results public after 2001

Clicking these labels will link to the OFA website detail for that data

	Year	Cases	Normal	Abnormal	Excellent	Good	Fair	Borderline	Mild	Moderate	Severe
Hips	1974	7	6	1 14.3	1 14.3	3 42.9	2 28.6		1 14.3		
	1975	5	4	1 20.0	1 20.0	3 60.0				1 20.0	
	1976	4	4			3 75.0	1 25.0				
	1977	16	14	2 12.5	1 6.3	8 50.0	5 31.3			2 12.5	
	1978	17	14	3 17.7		13 76.5	1 5.9		2 11.8		1 5.9
	1979	13	7	6 46.2		7 53.9			1 7.7	5 38.5	
	1980	8	6	2 25.0	1 12.5	4 50.0	1 12.5		2 25.0		
	1981	22	19	3 13.6	1 4.6	16 72.7	2 9.1		1 4.6	2 9.1	
	1982	16	14	2 12.5	1 6.3	11 68.8	2 12.5		1 6.3	1 6.3	
	1983	18	15	3 16.7	1 5.6	10 55.6	4 22.2		2 11.1	1 5.6	
	1984	13	8	5 38.5		7 53.9	1 7.7			5 38.5	
	1985	29	25	3 10.3		15 51.7	10 34.5	1 3.5	2 6.9	1 3.5	
	1986	15	12	3 20.0		6 40.0	6 40.0		2 13.3	1 6.7	
	1987	20	18	1 5.0	1 5.0	14 70.0	3 15.0	1 5.0	1 5.0		
	1988	19	15	4 21.1	1 5.3	7 36.8	7 36.8		1 5.3	3 15.8	
	1989	15	11	4 26.7	3 20.0	5 33.3	3 20.0		2 13.3	2 13.3	
	1990	18	13	5 27.8	2 11.1	9 50.0	2 11.1		1 5.6	3 16.7	1 5.6

# OFA Registry Summary by Report Year

## BLACK AND TAN COONHOUND

Percentage of cases where owners have chosen to make all results public after 2001

Clicking these labels will link to the OFA website detail for that data

	Year	Cases	Normal	Abnormal	Excellent	Good	Fair	Borderline	Mild	Moderate	Severe
Hips	1991	9	6	3 33.3		6 66.7				3 33.3	
	1992	22	19	2 9.1	4 18.2	14 63.6	1 4.6	1 4.6	1 4.6	1 4.6	
	1993	28	26	2 7.1	1 3.6	21 75.0	4 14.3		1 3.6	1 3.6	
	1994	19	18	1 5.3	3 15.8	12 63.2	3 15.8		1 5.3		
	1995	18	18			15 83.3	3 16.7				
	1996	27	17	8 29.6	1 3.7	11 40.7	5 18.5	2 7.4	5 18.5	3 11.1	
	1997	28	21	6 21.4	1 3.6	16 57.1	4 14.3	1 3.6	4 14.3	2 7.1	
	1998	23	17	6 26.1	1 4.4	11 47.8	5 21.7		3 13.0	3 13.0	
	1999	27	18	8 29.6	4 14.8	10 37.0	4 14.8	1 3.7	3 11.1	4 14.8	1 3.7
	2000	26	23	3 11.5	9 34.6	10 38.5	4 15.4		2 7.7	1 3.9	
	2001	11	11		1 9.1	9 81.8	1 9.1				
	2002	16 25.0	14	2 12.5	1 6.3	12 75.0	1 6.3		1 6.3	1 6.3	
	2003	26 23.1	24	2 7.7	6 23.1	15 57.7	3 11.5		1 3.9	1 3.9	
	2004	19 26.3	19		3 15.8	12 63.2	4 21.1				
2005	21 4.8	20	1 4.8	1 4.8	15 71.4	4 19.1			1 4.8		
2006	16 25.0	15	1 6.3	5 31.3	9 56.3	1 6.3		1 6.3			
2007	14 7.1	13	1 7.1	3 21.4	6 42.9	4 28.6		1 7.1			

# OFA Registry Summary by Report Year

## BLACK AND TAN COONHOUND

Percentage of cases where owners have chosen to make all results public after 2001

Clicking these labels will link to the OFA website detail for that data

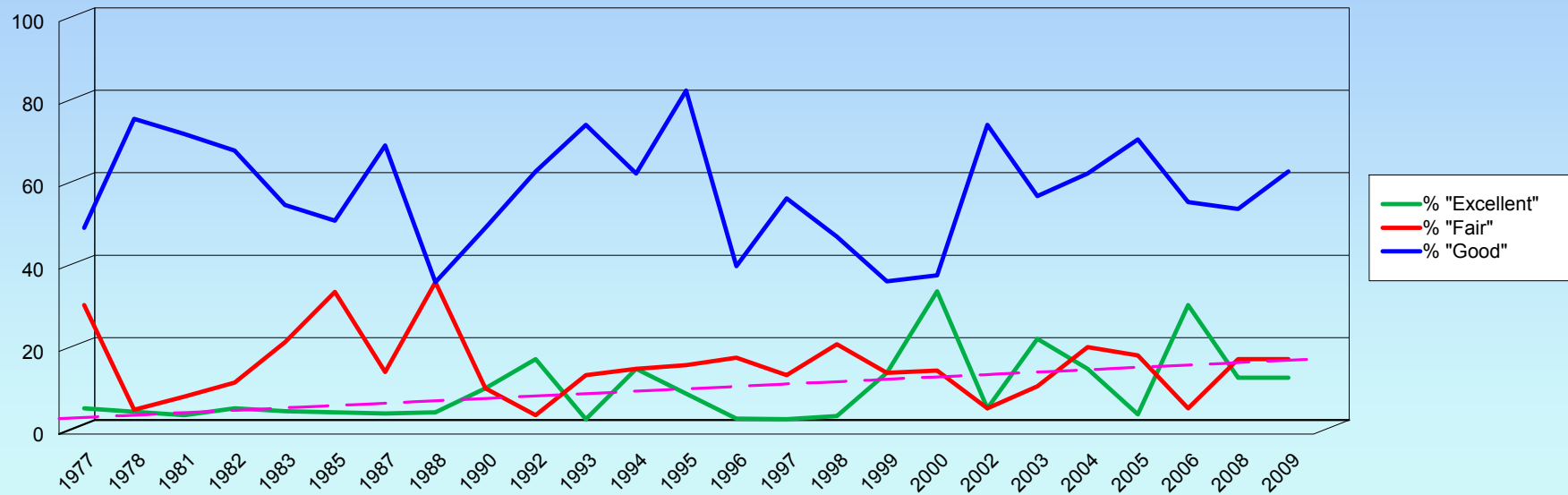
	Year	Cases	Normal	Abnormal	<a href="#">Excellent</a>	<a href="#">Good</a>	<a href="#">Fair</a>	<a href="#">Borderline</a>	<a href="#">Mild</a>	<a href="#">Moderate</a>	<a href="#">Severe</a>
Hips	2008	22 45.5	19	2 9.1	3 13.6	12 54.6	4 18.2	1 4.6	1 4.6	1 4.6	
	2009	22 4.5	21	1 4.6	3 13.6	14 63.6	4 18.2		1 4.6		
	2010	12 33.3	11	1 8.3	1 8.3	8 66.7	2 16.7		1 8.3		
	<b>Totals</b>	<b>661</b>	<b>555</b>	<b>98</b> 14.8	<b>65</b> 9.8	<b>379</b> 57.3	<b>111</b> 16.8	<b>8</b> 1.2	<b>46</b> 7.0	<b>49</b> 7.4	<b>3</b> 0.5

# OFA Registry Summary by Report Year

## BLACK AND TAN COONHOUND

### Distribution of normal hip readings by report year

Trend of "Excellent"



# OFA Registry Summary by Report Year

## BLACK AND TAN COONHOUND

YEAR	All Cases	Elbows BLACK AND TAN COONHOUND					
		Normal	Abnormal	Borderline	Grade 1 dysplasia	Grade 2	Grade 3
1993	1	1					
		100.0					
1995	1	1					
		100.0					
1996	1	1					
		100.0					
1997	3	3					
		100.0					
1998	1	1					
		100.0					
1999	4	4					
		100.0					
2000	3	3					
		100.0					
2001	3	2	1		1		
		66.7	33.3		100.0		
2002	4	4					
		100.0					
2003	4	4					
		100.0					
2004	2	2					
		100.0					
2005	7	7					
		100.0					
2006	5	5					
		100.0					
2007	6	6					
		100.0					
2008	7	7					
		100.0					
2009	11	11					
		100.0					
2010	5	5					
		100.0					
<b>Totals</b>	<b>68</b>	<b>67</b>	<b>1</b>		<b>1</b>		
		<b>98.5</b>	<b>1.5</b>		<b>100.0</b>		

# OFA Registry Summary by Report Year

## BLACK AND TAN COONHOUND

### Cardiac

### BLACK AND TAN COONHOUND

Year

All cases

Normal

Abnormal

Equival

1999	2	2 100.0		
2000	2	2 100.0		
2001	1	1 100.0		
2002	1	1 100.0		
2003	1	1 100.0		
2004	7	7 100.0		
2005	3	3 100.0		
2007	4	4 100.0		
2008	1	1 100.0		
2009	2	2 100.0		
2010	1	1 100.0		

Totals

25  
25  
100.0

# OFA Registry Summary by Report Year

## BLACK AND TAN COONHOUND

Year	Thyroid		BLACK AND TAN COONHOUND			
	All Cases	Normal	Abnormal	Autoimmune thyroiditis	Idiopathic Hypothyroidism	Equivocal
2005	1	1				
		100.0				
2007	1	1				
		100.0				
<b>Totals</b>	<b>2</b>	<b>2</b>				
		100.0				

# OFA Registry Summary by Report Year

## BLACK AND TAN COONHOUND

### Patella

### BLACK AND TAN COONHOUND

Year

All Cases

Normal

Abnormal

2003

1

1

100.0

2007

2

2

100.0

**Totals**

**3**

**3**

**100.0**

# OFA Registry Summary by Report Year

## BLACK AND TAN COONHOUND

### Spine

### BLACK AND TAN COONHOUND

All Cases

Normal

Abnormal

1994

1

1

100.0

1996

2

2

100.0

1998

1

1

100.0

1999

1

1

100.0

2000

1

1

100.0

**Totals**

**6**

**6**

**100.0**

# OFA Registry Summary by Report Year

## BLACK AND TAN COONHOUND

### Degenerative myelopathy

### BLACK AND TAN COONHOUND

All cases

Normal

Carrier

At risk

2009

3

3

100.0

Totals

3

3

100.0