

OFA Registry Summary by Report Year

BELGIAN TERVUREN

Percentage of cases where owners have chosen to make all results public after 2001

Clicking these labels will link to the OFA website detail for that data

| | Year | Cases | Normal | Abnormal | Excellent | Good | Fair | Borderline | Mild | Moderate | Severe |
|------|------|-------|--------|----------|-----------|------|------|------------|------|----------|--------|
| Hips | 1974 | 24 | 22 | 2 | 3 | 15 | 4 | | 2 | | |
| | | | | 8.3 | 12.5 | 62.5 | 16.7 | | 8.3 | | |
| | 1975 | 35 | 31 | 4 | 6 | 22 | 3 | | 4 | | |
| | | | | 11.4 | 17.1 | 62.9 | 8.6 | | 11.4 | | |
| | 1976 | 58 | 55 | 3 | 7 | 40 | 8 | | | 3 | |
| | | | | 5.2 | 12.1 | 69.0 | 13.8 | | | 5.2 | |
| | 1977 | 60 | 58 | 2 | 10 | 43 | 5 | | 2 | | |
| | | | | 3.3 | 16.7 | 71.7 | 8.3 | | 3.3 | | |
| | 1978 | 59 | 58 | 1 | 10 | 44 | 4 | | | 1 | |
| | | | | 1.7 | 17.0 | 74.6 | 6.8 | | | 1.7 | |
| | 1979 | 53 | 49 | 4 | 10 | 32 | 7 | | 3 | 1 | |
| | | | | 7.6 | 18.9 | 60.4 | 13.2 | | 5.7 | 1.9 | |
| | 1980 | 52 | 51 | 1 | 7 | 41 | 3 | | | 1 | |
| | | | | 1.9 | 13.5 | 78.9 | 5.8 | | | 1.9 | |
| | 1981 | 61 | 58 | 3 | 9 | 46 | 3 | | 3 | | |
| | | | | 4.9 | 14.8 | 75.4 | 4.9 | | 4.9 | | |
| 1982 | 89 | 84 | 4 | 14 | 63 | 7 | 1 | 3 | 1 | | |
| | | | 4.5 | 15.7 | 70.8 | 7.9 | 1.1 | 3.4 | 1.1 | | |
| 1983 | 86 | 80 | 4 | 9 | 62 | 9 | 2 | 2 | 1 | 1 | |
| | | | 4.7 | 10.5 | 72.1 | 10.5 | 2.3 | 2.3 | 1.2 | 1.2 | |
| 1984 | 108 | 98 | 10 | 15 | 78 | 5 | | 4 | 6 | | |
| | | | 9.3 | 13.9 | 72.2 | 4.6 | | 3.7 | 5.6 | | |
| 1985 | 116 | 110 | 5 | 21 | 82 | 7 | 1 | 2 | 3 | | |
| | | | 4.3 | 18.1 | 70.7 | 6.0 | 0.9 | 1.7 | 2.6 | | |
| 1986 | 85 | 82 | 3 | 9 | 66 | 7 | | 2 | | 1 | |
| | | | 3.5 | 10.6 | 77.7 | 8.2 | | 2.4 | | 1.2 | |
| 1987 | 117 | 112 | 5 | 15 | 90 | 7 | | 3 | 2 | | |
| | | | 4.3 | 12.8 | 76.9 | 6.0 | | 2.6 | 1.7 | | |
| 1988 | 139 | 131 | 7 | 23 | 103 | 5 | 1 | 4 | 3 | | |
| | | | 5.0 | 16.6 | 74.1 | 3.6 | 0.7 | 2.9 | 2.2 | | |
| 1989 | 147 | 141 | 6 | 31 | 102 | 8 | | 3 | 2 | 1 | |
| | | | 4.1 | 21.1 | 69.4 | 5.4 | | 2.0 | 1.4 | 0.7 | |
| 1990 | 138 | 135 | 3 | 30 | 94 | 11 | | 1 | 2 | | |
| | | | 2.2 | 21.7 | 68.1 | 8.0 | | 0.7 | 1.5 | | |

OFA Registry Summary by Report Year

BELGIAN TERVUREN

Percentage of cases where owners have chosen to make all results public after 2001

Clicking these labels will link to the OFA website detail for that data

| | Year | Cases | Normal | Abnormal | Excellent | Good | Fair | Borderline | Mild | Moderate | Severe |
|------|-------------|-------------|-----------|------------|-------------|-------------|------------|------------|----------|----------|----------|
| Hips | 1991 | 193 | 183 | 10 5.2 | 36 18.7 | 119 61.7 | 28 14.5 | | 6 3.1 | 4 2.1 | |
| | 1992 | 197 | 191 | 6 3.1 | 38 19.3 | 144 73.1 | 9 4.6 | | 4 2.0 | 1 0.5 | 1 0.5 |
| | 1993 | 211 | 207 | 4 1.9 | 67 31.8 | 133 63.0 | 7 3.3 | | 4 1.9 | | |
| | 1994 | 199 | 188 | 10 5.0 | 43 21.6 | 137 68.8 | 8 4.0 | 1 0.5 | 7 3.5 | 3 1.5 | |
| | 1995 | 168 | 161 | 5 3.0 | 50 29.8 | 105 62.5 | 6 3.6 | 2 1.2 | 4 2.4 | 1 0.6 | |
| | 1996 | 186 | 177 | 8 4.3 | 48 25.8 | 114 61.3 | 15 8.1 | 1 0.5 | 7 3.8 | 1 0.5 | |
| | 1997 | 211 | 203 | 7 3.3 | 50 23.7 | 133 63.0 | 20 9.5 | 1 0.5 | 4 1.9 | 3 1.4 | |
| | 1998 | 217 0.5 | 212 | 4 1.8 | 57 26.3 | 136 62.7 | 19 8.8 | 1 0.5 | 1 0.5 | 3 1.4 | |
| | 1999 | 194 | 189 | 4 2.1 | 60 30.9 | 120 61.9 | 9 4.6 | 1 0.5 | 4 2.1 | | |
| | 2000 | 235 0.9 | 226 | 8 3.4 | 89 37.9 | 127 54.0 | 10 4.3 | 1 0.4 | 5 2.1 | 2 0.9 | 1 0.4 |
| | 2001 | 172 10.5 | 168 | 4 2.3 | 56 32.6 | 97 56.4 | 15 8.7 | | 4 2.3 | | |
| | 2002 | 243 27.6 | 237 | 6 2.5 | 68 28.0 | 156 64.2 | 13 5.4 | | 4 1.7 | 2 0.8 | |
| | 2003 | 186 21.0 | 182 | 4 2.2 | 58 31.2 | 118 63.4 | 6 3.2 | | 2 1.1 | 1 0.5 | 1 0.5 |
| | 2004 | 239 27.2 | 233 | 6 2.5 | 81 33.9 | 144 60.3 | 8 3.4 | | 3 1.3 | 3 1.3 | |
| 2005 | 211 28.4 | 201 | 10 4.7 | 70 33.2 | 124 58.8 | 7 3.3 | | 8 3.8 | 2 1.0 | | |
| 2006 | 206 36.4 | 196 | 7 3.4 | 63 30.6 | 125 60.7 | 8 3.9 | 3 1.5 | 3 1.5 | 4 1.9 | | |
| 2007 | 233 35.2 | 228 | 5 2.2 | 63 27.0 | 152 65.2 | 13 5.6 | | 2 0.9 | 2 0.9 | 1 0.4 | |

OFA Registry Summary by Report Year

BELGIAN TERVUREN

Percentage of cases where owners have chosen to make all results public after 2001

Clicking these labels will link to the OFA website detail for that data

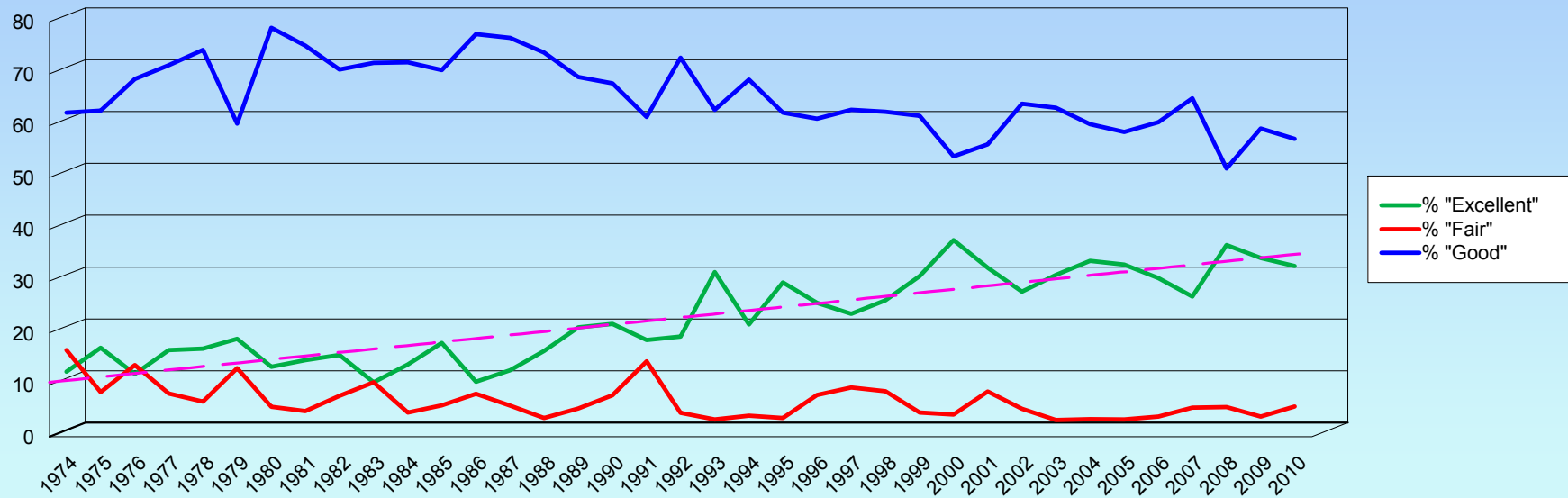
| | Year | Cases | Normal | Abnormal | Excellent | Good | Fair | Borderline | Mild | Moderate | Severe |
|--------|------|-------------|--------|------------|---------------------------|----------------------|----------------------|----------------------------|----------------------|--------------------------|------------------------|
| Hips | 2008 | 176 31.8 | 166 | 10 5.7 | 65 36.9 | 91 51.7 | 10 5.7 | | 7 4.0 | 3 1.7 | |
| | 2009 | 180 22.2 | 176 | 3 1.7 | 62 34.4 | 107 59.4 | 7 3.9 | 1 0.6 | 2 1.1 | 1 0.6 | |
| | 2010 | 155 34.2 | 149 | 6 3.9 | 51 32.9 | 89 57.4 | 9 5.8 | | 6 3.9 | | |
| Totals | | 5439 | 5228 | 194 3.6 | 1404 25.8 | 3494 64.2 | 330 6.1 | 17 0.3 | 125 2.3 | 62 1.1 | 7 0.1 |

OFA Registry Summary by Report Year

BELGIAN TERVUREN

Distribution of normal hip readings by report year

Trend of "Excellent"



OFA Registry Summary by Report Year

BELGIAN TERVUREN

| YEAR | All Cases | Elbows BELGIAN TERVUREN | | | | | |
|---------------|-------------|-------------------------|------------|------------|-------------------|-------------|------------|
| | | Normal | Abnormal | Borderline | Grade 1 dysplasia | Grade 2 | Grade 3 |
| 1990 | 2 | 2 | | | | | |
| | | 100.0 | | | | | |
| 1991 | 3 | 3 | | | | | |
| | | 100.0 | | | | | |
| 1992 | 20 | 18 | 2 | | 1 | 1 | |
| | | 90.0 | 10.0 | | 50.0 | 50.0 | |
| 1993 | 86 | 81 | 4 | 1 | 4 | | |
| | | 94.2 | 4.7 | 1.2 | 100.0 | | |
| 1994 | 92 | 89 | 2 | 1 | | 2 | |
| | | 96.7 | 2.2 | 1.1 | | 100.0 | |
| 1995 | 73 | 72 | 1 | | 1 | | |
| | | 98.6 | 1.4 | | 100.0 | | |
| 1996 | 91 | 82 | 7 | 2 | 5 | 1 | 1 |
| | | 90.1 | 7.7 | 2.2 | 71.4 | 14.3 | 14.3 |
| 1997 | 132 | 124 | 7 | 1 | 4 | 3 | |
| | | 93.9 | 5.3 | 0.8 | 57.1 | 42.9 | |
| 1998 | 147 | 141 | 6 | | 6 | | |
| | | 95.9 | 4.1 | | 100.0 | | |
| 1999 | 141 | 138 | 3 | | 3 | | |
| | | 97.9 | 2.1 | | 100.0 | | |
| 2000 | 182 | 167 | 14 | 1 | 11 | 3 | |
| | | 91.8 | 7.7 | 0.6 | 78.6 | 21.4 | |
| 2001 | 148 | 145 | 3 | | 2 | 1 | |
| | | 98.0 | 2.0 | | 66.7 | 33.3 | |
| 2002 | 212 | 204 | 8 | | 7 | 1 | |
| | | 96.2 | 3.8 | | 87.5 | 12.5 | |
| 2003 | 159 | 156 | 3 | | 3 | | |
| | | 98.1 | 1.9 | | 100.0 | | |
| 2004 | 221 | 212 | 9 | | 7 | 2 | |
| | | 95.9 | 4.1 | | 77.8 | 22.2 | |
| 2005 | 186 | 180 | 6 | | 5 | 1 | |
| | | 96.8 | 3.2 | | 83.3 | 16.7 | |
| 2006 | 186 | 176 | 10 | | 8 | 2 | |
| | | 94.6 | 5.4 | | 80.0 | 20.0 | |
| 2007 | 218 | 202 | 16 | | 15 | 1 | |
| | | 92.7 | 7.3 | | 93.8 | 6.3 | |
| 2008 | 173 | 163 | 10 | | 9 | 1 | |
| | | 94.2 | 5.8 | | 90.0 | 10.0 | |
| 2009 | 161 | 155 | 5 | 1 | 5 | | |
| | | 96.3 | 3.1 | 0.6 | 100.0 | | |
| 2010 | 150 | 135 | 15 | | 11 | 4 | |
| | | 90.0 | 10.0 | | 73.3 | 26.7 | |
| Totals | 2783 | 2645 | 131 | 7 | 107 | 23 | 1 |
| | | 95.0 | 4.7 | 0.3 | 81.7 | 17.6 | 0.8 |

OFA Registry Summary by Report Year

BELGIAN TERVUREN

Cardiac

BELGIAN TERVUREN

| Year | All cases | Normal | Abnormal | Equival |
|---------------|------------|----------------------|----------|---------|
| 1997 | 6 | 6 100.0 | | |
| 1998 | 2 | 2 100.0 | | |
| 1999 | 19 | 19 100.0 | | |
| 2000 | 11 | 11 100.0 | | |
| 2001 | 11 | 11 100.0 | | |
| 2002 | 8 | 8 100.0 | | |
| 2003 | 24 | 24 100.0 | | |
| 2004 | 21 | 21 100.0 | | |
| 2005 | 12 | 12 100.0 | | |
| 2006 | 31 | 31 100.0 | | |
| 2007 | 24 | 24 100.0 | | |
| 2008 | 18 | 18 100.0 | | |
| 2009 | 28 | 28 100.0 | | |
| 2010 | 15 | 15 100.0 | | |
| Totals | 230 | 230 100.0 | | |

OFA Registry Summary by Report Year

BELGIAN TERVUREN

OFA Registry Summary by Report Year

BELGIAN TERVUREN

| Year | Thyroid | | BELGIAN TERVUREN | | | |
|------|-----------|--------|------------------|------------------------|---------------------------|-----------|
| | All Cases | Normal | Abnormal | Autoimmune thyroiditis | Idiopathic Hypothyroidism | Equivocal |
| 1996 | 6 | 1 | | | | 5 |
| | | 16.7 | | | | 83.3 |
| 1997 | 6 | 5 | | | | 1 |
| | | 83.3 | | | | 16.7 |
| 1998 | 9 | 7 | | | | 2 |
| | | 77.8 | | | | 22.2 |
| 1999 | 20 | 12 | 1 | 1 | | 7 |
| | | 60.0 | 5.0 | 5.0 | | 35.0 |
| 2000 | 18 | 9 | | | | 9 |
| | | 50.0 | | | | 50.0 |
| 2001 | 22 | 21 | | | | 1 |
| | | 95.5 | | | | 4.6 |
| 2002 | 19 | 14 | 1 | 1 | | 4 |
| | | 73.7 | 5.3 | 5.3 | | 21.1 |
| 2003 | 56 | 40 | 1 | 1 | | 15 |
| | | 71.4 | 1.8 | 1.8 | | 26.8 |
| 2004 | 66 | 59 | 1 | | 1 | 6 |
| | | 89.4 | 1.5 | | 1.5 | 9.1 |
| 2005 | 70 | 61 | 3 | 3 | | 6 |
| | | 87.1 | 4.3 | 4.3 | | 8.6 |
| 2006 | 91 | 86 | 1 | 1 | | 4 |
| | | 94.5 | 1.1 | 1.1 | | 4.4 |
| 2007 | 104 | 91 | 1 | 1 | | 12 |
| | | 87.5 | 1.0 | 1.0 | | 11.5 |
| 2008 | 88 | 74 | 1 | 1 | | 13 |
| | | 84.1 | 1.1 | 1.1 | | 14.8 |
| 2009 | 69 | 60 | | | | 9 |
| | | 87.0 | | | | 13.0 |
| 2010 | 65 | 53 | 2 | 1 | 1 | 10 |
| | | 81.5 | 3.1 | 1.5 | 1.5 | 15.4 |

OFA Registry Summary by Report Year

BELGIAN TERVUREN

| | | | | | | |
|--------|-----|------|-----|-----|-----|------|
| Totals | 709 | 593 | 12 | 10 | 2 | 104 |
| | | 83.6 | 1.7 | 1.4 | 0.3 | 14.7 |

OFA Registry Summary by Report Year

BELGIAN TERVUREN

Patella

BELGIAN TERVUREN

Year

All Cases

Normal

Abnormal

1994

3

3

1999

1

100.0

1

2001

1

100.0

1

2002

5

100.0

5

2003

3

100.0

3

2004

3

100.0

3

2005

1

100.0

1

2006

12

100.0

12

2007

3

100.0

3

2008

2

100.0

2

2009

2

100.0

2

2010

2

100.0

2

100.0

Totals

38

38

100.0

OFA Registry Summary by Report Year

BELGIAN TERVUREN

| Legg-Calve-Perthes | | | BELGIAN TERVUREN | |
|--------------------|-----------|--------|------------------|--------|
| Year | All Cases | Normal | Abnormal | LPQHIP |
| 2007 | 1 | | 1 | |
| | | | 100 | |
| Totals | 1 | | 1 | |
| | | | 100 | |

OFA Registry Summary by Report Year

BELGIAN TERVUREN

Baer Hearing

BELGIAN TERVUREN

| Year | All Cases | Normal | Abnormal |
|---------------|-----------|-------------------------|-------------------------|
| 2006 | 2 | 2 100.0 | |
| 2008 | 2 | 2 100.0 | |
| 2009 | 3 | 2 66.7 | 1 33.3 |
| Totals | 7 | 6 85.7 | 1 14.3 |

OFA Registry Summary by Report Year

BELGIAN TERVUREN

Spine

BELGIAN TERVUREN

All Cases

Normal

Abnormal

| | | | |
|---------------|-----------|--|--------------|
| 1993 | 3 | | 3 |
| | | | 100.0 |
| 1994 | 3 | | 3 |
| | | | 100.0 |
| 1995 | 2 | | 2 |
| | | | 100.0 |
| 1996 | 2 | | 2 |
| | | | 100.0 |
| 1997 | 2 | | 2 |
| | | | 100.0 |
| 1998 | 3 | | 3 |
| | | | 100.0 |
| 1999 | 7 | | 7 |
| | | | 100.0 |
| 2000 | 3 | | 3 |
| | | | 100.0 |
| 2001 | 5 | | 5 |
| | | | 100.0 |
| 2002 | 1 | | 1 |
| | | | 100.0 |
| Totals | 31 | | 31 |
| | | | 100.0 |

OFA Registry Summary by Report Year

BELGIAN TERVUREN

Degenerative myelopathy

BELGIAN TERVUREN

All cases

Normal

Carrier

At risk

2009

3

3

100.0

Totals

3

3

100.0