

OFA Registry Summary by Report Year

BLOODHOUND

Percentage of cases where owners have chosen to make all results public after 2001

Clicking these labels will link to the OFA website detail for that data

	Year	Cases	Normal	Abnormal	Excellent	Good	Fair	Borderline	Mild	Moderate	Severe
Hips	1974	24	18	6 25.0	1 4.2	5 20.8	12 50.0		1 4.2	4 16.7	1 4.2
	1975	26	20	6 23.1		14 53.9	6 23.1		4 15.4	2 7.7	
	1976	40	33	6 15.0		18 45.0	15 37.5	1 2.5	6 15.0		
	1977	51	38	13 25.5		23 45.1	15 29.4		8 15.7	5 9.8	
	1978	47	34	13 27.7		19 40.4	15 31.9		8 17.0	5 10.6	
	1979	38	30	8 21.1		18 47.4	12 31.6		6 15.8	2 5.3	
	1980	67	41	23 34.3		19 28.4	22 32.8	3 4.5	10 14.9	10 14.9	3 4.5
	1981	58	45	10 17.2		27 46.6	18 31.0	3 5.2	6 10.3	3 5.2	1 1.7
	1982	65	44	18 27.7		28 43.1	16 24.6	3 4.6	7 10.8	10 15.4	1 1.5
	1983	108	79	28 25.9		49 45.4	30 27.8	1 0.9	15 13.9	11 10.2	2 1.9
	1984	82	53	29 35.4		31 37.8	22 26.8		14 17.1	12 14.6	3 3.7
	1985	72	57	13 18.1	3 4.2	34 47.2	20 27.8	2 2.8	8 11.1	5 6.9	
	1986	93	61	30 32.3	2 2.2	31 33.3	28 30.1	2 2.2	14 15.1	15 16.1	1 1.1
	1987	83	55	28 33.7		33 39.8	22 26.5		17 20.5	8 9.6	3 3.6
	1988	47	33	14 29.8	1 2.1	16 34.0	16 34.0		11 23.4	3 6.4	
	1989	59	39	19 32.2	1 1.7	22 37.3	16 27.1	1 1.7	10 17.0	8 13.6	1 1.7
1990	70	41	24 34.3		26 37.1	15 21.4	5 7.1	15 21.4	8 11.4	1 1.4	

OFA Registry Summary by Report Year

BLOODHOUND

Percentage of cases where owners have chosen to make all results public after 2001

Clicking these labels will link to the OFA website detail for that data

	Year	Cases	Normal	Abnormal	Excellent	Good	Fair	Borderline	Mild	Moderate	Severe
Hips	1991	53	36	16 30.2	2 3.8	14 26.4	20 37.7	1 1.9	6 11.3	9 17.0	1 1.9
	1992	70	52	17 24.3	2 2.9	29 41.4	21 30.0	1 1.4	9 12.9	7 10.0	1 1.4
	1993	74	61	12 16.2	2 2.7	36 48.7	23 31.1	1 1.4	8 10.8	4 5.4	
	1994	75	61	13 17.3	5 6.7	31 41.3	25 33.3	1 1.3	5 6.7	6 8.0	2 2.7
	1995	70	50	19 27.1	3 4.3	38 54.3	9 12.9	1 1.4	10 14.3	9 12.9	
	1996	93	70	17 18.3	3 3.2	40 43.0	27 29.0	6 6.5	8 8.6	8 8.6	1 1.1
	1997	93	71	20 21.5	2 2.2	41 44.1	28 30.1	2 2.2	14 15.1	6 6.5	
	1998	119	88	29 24.4	4 3.4	47 39.5	37 31.1	2 1.7	19 16.0	9 7.6	1 0.8
	1999	93	63	26 28.0	1 1.1	42 45.2	20 21.5	4 4.3	12 12.9	13 14.0	1 1.1
	2000	97	64	30 30.9	3 3.1	42 43.3	19 19.6	3 3.1	18 18.6	12 12.4	
	2001	80 5.0	53	27 33.8	5 6.3	29 36.3	19 23.8		16 20.0	8 10.0	3 3.8
	2002	118 10.2	86	27 22.9	5 4.2	59 50.0	22 18.6	5 4.2	18 15.3	7 5.9	2 1.7
	2003	88 10.2	68	19 21.6	1 1.1	41 46.6	26 29.6	1 1.1	15 17.1	3 3.4	1 1.1
	2004	86 19.8	69	17 19.8	6 7.0	37 43.0	26 30.2		13 15.1	4 4.7	
2005	64 21.9	52	11 17.2	3 4.7	38 59.4	11 17.2	1 1.6	7 10.9	2 3.1	2 3.1	
2006	80 27.5	57	20 25.0	2 2.5	36 45.0	19 23.8	3 3.8	17 21.3	2 2.5	1 1.3	
2007	82 13.4	55	27 32.9	5 6.1	32 39.0	18 22.0		20 24.4	7 8.5		

OFA Registry Summary by Report Year

BLOODHOUND

Percentage of cases where owners have chosen to make all results public after 2001

Clicking these labels will link to the OFA website detail for that data

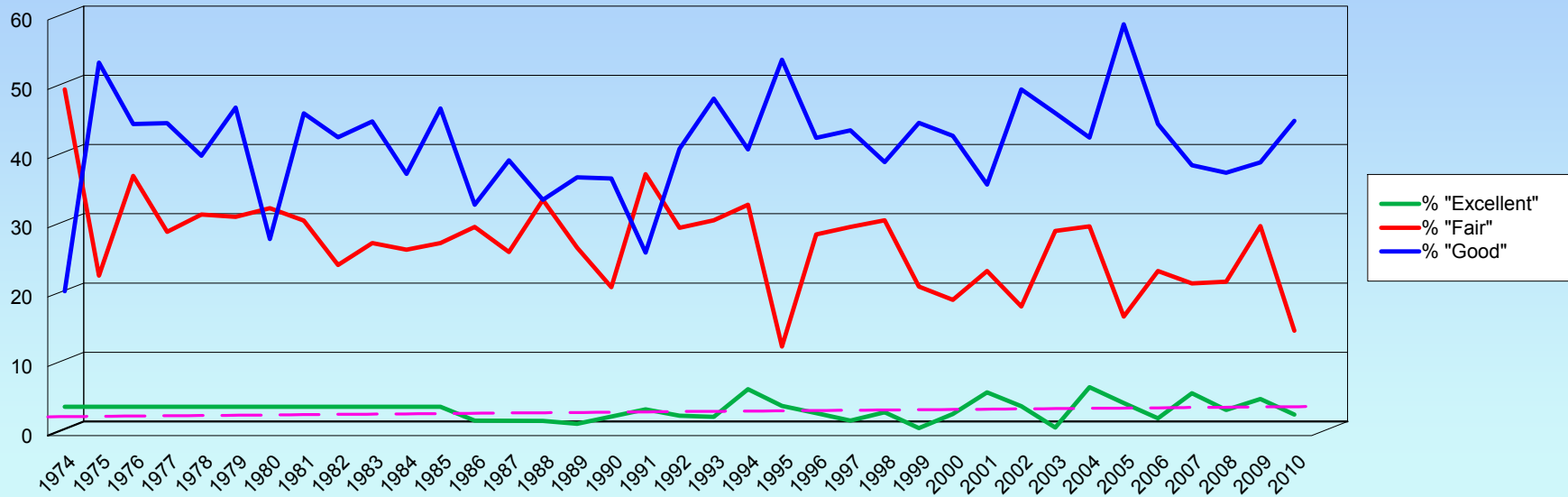
	Year	Cases	Normal	Abnormal	Excellent	Good	Fair	Borderline	Mild	Moderate	Severe
Hips	2008	108 18.5	69	38 35.2	4 3.7	41 38.0	24 22.2	1 0.9	23 21.3	14 13.0	1 0.9
	2009	76 14.5	57	18 23.7	4 5.3	30 39.5	23 30.3	1 1.3	14 18.4	4 5.3	
	2010	33 21.2	21	11 33.3	1 3.0	15 45.5	5 15.2	1 3.0	3 9.1	7 21.2	1 3.0
	Totals	2682	1924	702 26.2	71 2.7	1131 42.2	722 26.9	56 2.1	415 15.5	252 9.4	35 1.3

OFA Registry Summary by Report Year

BLOODHOUND

Distribution of normal hip readings by report year

Trend of "Excellent"



OFA Registry Summary by Report Year

BLOODHOUND

YEAR	All Cases	Elbows BLOODHOUND					
		Normal	Abnormal	Borderline	Grade 1 dysplasia	Grade 2	Grade 3
1990	3		3		1	1	1
1991	11	9	2		2		
1992	16	14	2		2		
1993	20	15	5			2	3
1994	22	18	4		3		1
1995	17	16	1		1		
1996	34	27	4	3	3		1
1997	46	35	9	2	8	1	
1998	57	51	6		6		
1999	40	35	5		5		
2000	65	52	13		11	1	1
2001	53	44	8	1	6	1	1
2002	95	79	16		12	2	2
2003	63	54	9		5	2	2
2004	64	55	9		8	1	
2005	55	46	9		7	1	1
2006	70	59	11		9	2	
2007	70	60	10		8	2	
2008	97	81	16		10	3	3
2009	67	60	7		4	1	2
2010	27	26	1		1		
Totals	992	836	150	6	112	20	18
		84.3	15.1	0.6	74.7	13.3	12.0

OFA Registry Summary by Report Year

BLOODHOUND

Cardiac **BLOODHOUND**

Year **All cases** **Normal** **Abnormal** **Equival**

Year	All cases	Normal	Abnormal	Equival
1998	6	6 100.0		
1999	28	28 100.0		
2000	13	13 100.0		
2001	18	18 100.0		
2002	27	27 100.0		
2003	42	41 97.6		1 2.4
2004	56	55 98.2	1 1.8	
2005	59	59 100.0		
2006	61	60 98.4		1 1.6
2007	47	47 100.0		
2008	67	65 97.0	1 1.5	1 1.5
2009	47	45 95.7	1 2.1	1 2.1
2010	28	27 96.4		1 3.6
Totals	499	491 98.4	3 0.6	5 1.0

OFA Registry Summary by Report Year

BLOODHOUND

Year	Thyroid		BLOODHOUND			
	All Cases	Normal	Abnormal	Autoimmune thyroiditis	Idiopathic Hypothyroidism	Equivocal
1998	2	1				1
		50.0				50.0
1999	8	4	2	2		2
		50.0	25.0	25.0		25.0
2000	18	13	1	1		4
		72.2	5.6	5.6		22.2
2001	2	1				1
		50.0				50.0
2002	6	6				
		100.0				
2003	5	3				2
		60.0				40.0
2004	23	22	1	1		
		95.7	4.4	4.4		
2005	14	7	2	2		5
		50.0	14.3	14.3		35.7
2006	8	7				1
		87.5				12.5
2007	8	6				2
		75.0				25.0
2008	18	15				3
		83.3				16.7
2009	5	1	1	1		3
		20.0	20.0	20.0		60.0
2010	5	4				1
		80.0				20.0
Totals	122	90	7	7		25
		73.8	5.7	5.7		20.5

OFA Registry Summary by Report Year

BLOODHOUND

Patella

BLOODHOUND

Year All Cases Normal Abnormal

1998	2	2	
2000	8	100.0	
2001	8	100.0	
2002	6	100.0	
2003	21	19	2
2004	18	16	2
2005	10	10	
2006	8	8	
2007	14	14	
2008	15	15	
2009	6	6	
2010	6	6	

Totals	122	118	4
		96.7	3.3

OFA Registry Summary by Report Year

BLOODHOUND

Spine

BLOODHOUND

All Cases

Normal

Abnormal

Year	All Cases	Normal	Abnormal
1992	1		1
1993	2		2
1994	2		2
1995	1		1
1996	2		2
1997	5		5
1998	4		4
1999	5		5
2000	4		4
2001	4		4
2006	1	1	

100.0

Totals

31

1

30

3.2

96.8

OFA Registry Summary by Report Year

BLOODHOUND

Degenerative myelopathy

BLOODHOUND

All cases

Normal

Carrier

At risk

2009	16	9	6	1
		56.3	37.5	6.3
2010	24	12	10	2
		50.0	41.7	8.3
Totals	40	21	16	3
		52.5	40.0	7.5