

OFA Registry Summary by Report Year

AMERICAN WATER SPANIEL

Percentage of cases where owners have chosen to make all results public after 2001

Clicking these labels will link to the OFA website detail for that data

	Year	Cases	Normal	Abnormal	Excellent	Good	Fair	Borderline	Mild	Moderate	Severe
Hips	1974	3	3			2 66.7	1 33.3				
	1975	1	1			1 100.0					
	1976	4	3	1 25.0		2 50.0	1 25.0		1 25.0		
	1977	6	5	1 16.7		4 66.7	1 16.7		1 16.7		
	1978	5	3	2 40.0		2 40.0	1 20.0		1 20.0	1 20.0	
	1979	4	4			3 75.0	1 25.0				
	1980	5	3	2 40.0		1 20.0	2 40.0		1 20.0	1 20.0	
	1981	5	3	2 40.0		1 20.0	2 40.0		2 40.0		
	1982	7	7			6 85.7	1 14.3				
	1983	7	7			4 57.1	3 42.9				
	1984	7	6			4 57.1	2 28.6	1 14.3			
	1985	7	7			5 71.4	2 28.6				
	1986	11	11			9 81.8	2 18.2				
	1987	13	11	2 15.4		1 7.7	9 69.2	1 7.7		1 7.7	1 7.7
	1988	16	15	1 6.3		2 12.5	8 50.0	5 31.3		1 6.3	
	1989	7	5	1 14.3			3 42.9	2 28.6	1 14.3		1 14.3
1990	15	14		1 6.7	1 6.7	10 66.7	3 20.0		1 6.7		

OFA Registry Summary by Report Year

AMERICAN WATER SPANIEL

Percentage of cases where owners have chosen to make all results public after 2001

Clicking these labels will link to the OFA website detail for that data

	Year	Cases	Normal	Abnormal	Excellent	Good	Fair	Borderline	Mild	Moderate	Severe
Hips	1991	19	18	1 5.3		11 57.9	7 36.8			1 5.3	
	1992	28	25	3 10.7		19 67.9	6 21.4		1 3.6	1 3.6	1 3.6
	1993	40	34	6 15.0	1 2.5	25 62.5	8 20.0		4 10.0	2 5.0	
	1994	35	32	3 8.6	3 8.6	19 54.3	10 28.6		1 2.9	2 5.7	
	1995	30	28	1 3.3	5 16.7	13 43.3	10 33.3	1 3.3	1 3.3		
	1996	40	36	3 7.5	3 7.5	21 52.5	12 30.0	1 2.5	2 5.0	1 2.5	
	1997	26	26		1 3.9	13 50.0	12 46.2				
	1998	29	29		6 20.7	15 51.7	8 27.6				
	1999	36	31	4 11.1		25 69.4	6 16.7	1 2.8	2 5.6	2 5.6	
	2000	15	13	2 13.3	2 13.3	9 60.0	2 13.3		2 13.3		
	2001	41 2.4	38	3 7.3	6 14.6	27 65.9	5 12.2		2 4.9	1 2.4	
	2002	22 9.1	20	2 9.1	1 4.6	14 63.6	5 22.7			2 9.1	
	2003	25	22	1 4.0	4 16.0	14 56.0	4 16.0	2 8.0	1 4.0		
	2004	48 29.2	43	4 8.3	5 10.4	33 68.8	5 10.4	1 2.1	2 4.2	2 4.2	
2005	23 13.0	22	1 4.4	5 21.7	16 69.6	1 4.4		1 4.4			
2006	20 20.0	19	1 5.0	3 15.0	16 80.0			1 5.0			
2007	58 29.3	54	4 6.9	11 19.0	35 60.3	8 13.8		2 3.5	2 3.5		

OFA Registry Summary by Report Year

AMERICAN WATER SPANIEL

Percentage of cases where owners have chosen to make all results public after 2001

Clicking these labels will link to the OFA website detail for that data

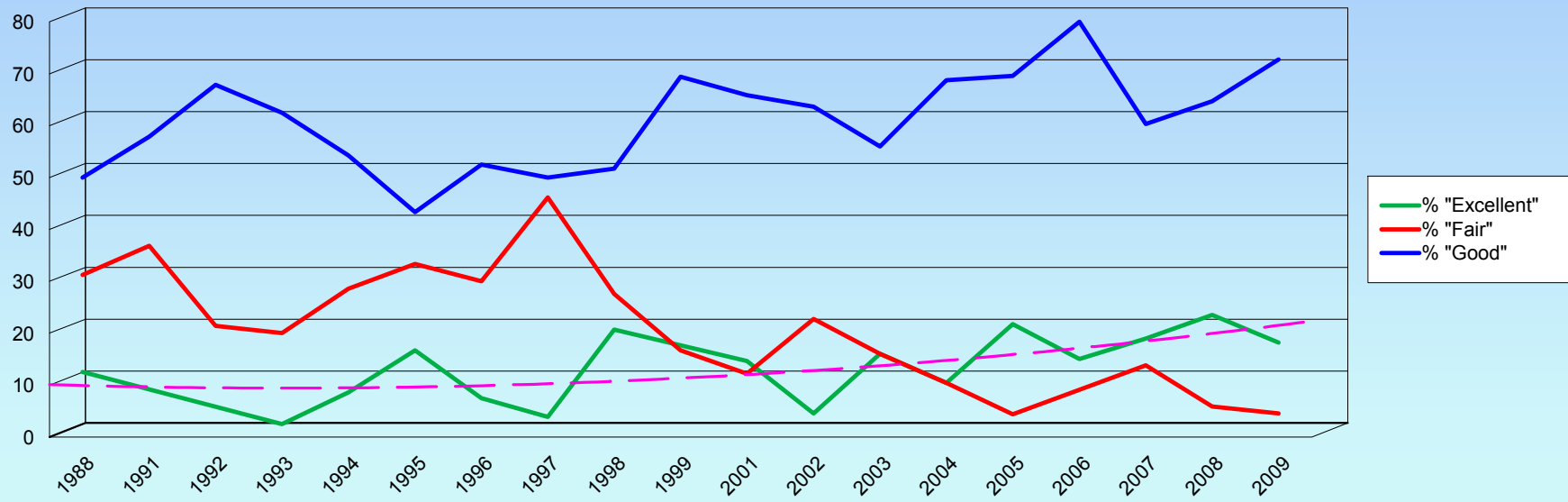
	Year	Cases	Normal	Abnormal	Excellent	Good	Fair	Borderline	Mild	Moderate	Severe
Hips	2008	17 17.6	16	1 5.9	4 23.5	11 64.7	1 5.9			1 5.9	
	2009	22 18.2	21	1 4.6	4 18.2	16 72.7	1 4.6		1 4.6		
	2010	14 28.6	13	1 7.1	2 14.3	10 71.4	1 7.1		1 7.1		
	Totals	711	648	55 7.7	70 9.9	436 61.3	142 20.0	8 1.1	33 4.6	21 3.0	1 0.1

OFA Registry Summary by Report Year

AMERICAN WATER SPANIEL

Distribution of normal hip readings by report year

Trend of "Excellent"



OFA Registry Summary by Report Year

AMERICAN WATER SPANIEL

YEAR	All Cases	Elbows AMERICAN WATER SPANIEL					
		<i>Normal</i>	<i>Abnormal</i>	Borderline	Grade 1 dysplasia	Grade 2	Grade 3
1994	1	1					
		100.0					
1995	1	1					
		100.0					
1996	2	2					
		100.0					
1997	3	3					
		100.0					
1998	2	2					
		100.0					
1999	2	2					
		100.0					
2000	1	1					
		100.0					
2001	7	7					
		100.0					
2002	3	3					
		100.0					
2003	3	3					
		100.0					
2004	5	5					
		100.0					
2005	3	3					
		100.0					
2006	1	1					
		100.0					
2007	14	14					
		100.0					
2008	2	2					
		100.0					
2009	1	1					
		100.0					
2010	4	4					
		100.0					
Totals	55	55					
		100.0					

OFA Registry Summary by Report Year

AMERICAN WATER SPANIEL

Cardiac

AMERICAN WATER SPANIEL

Year	All cases	Normal	Abnormal	Equivocal
1996	3	3 100.0		
1997	3	2 66.7		1 33.3
1998	1	1 100.0		
1999	6	5 83.3		1 16.7
2000	36	34 94.4	1 2.8	1 2.8
2001	14	14 100.0		
2002	10	10 100.0		
2003	32	32 100.0		
2004	22	22 100.0		
2005	12	12 100.0		
2006	14	14 100.0		
2007	35	33 94.3		2 5.7
2008	12	12 100.0		
2009	16	16 100.0		
2010	19	19 100.0		

OFA Registry Summary by Report Year

AMERICAN WATER SPANIEL

Totals	235	229 97.5	1 0.4	5 2.1
--------	-----	-------------	----------	----------

OFA Registry Summary by Report Year

AMERICAN WATER SPANIEL

Year	Thyroid		AMERICAN WATER SPANIEL			
	All Cases	Normal	Abnormal	Autoimmune thyroiditis	Idiopathic Hypothyroidism	Equivocal
2003	10	9	1	1		
		90.0	10.0	10.0		
2004	5	5				
		100.0				
2005	4	4				
		100.0				
2006	6	6				
		100.0				
2007	11	11				
		100.0				
2008	4	1				3
		25.0				75.0
2009	2	2				
		100.0				
2010	1	1				
		100.0				
Totals	43	39	1	1		3
		90.7	2.3	2.3		7.0

OFA Registry Summary by Report Year

AMERICAN WATER SPANIEL

Patella

AMERICAN WATER SPANIEL

Year

All Cases

Normal

Abnormal

1996

2

2

100.0

2001

1

1

100.0

2005

1

1

100.0

Totals

4

4

100.0

OFA Registry Summary by Report Year

AMERICAN WATER SPANIEL

Spine

AMERICAN WATER SPANIEL

All Cases

Normal

Abnormal

1994

2

2

100.0

1995

1

1

100.0

1996

9

9

100.0

1997

1

1

100.0

1999

3

3

100.0

2000

2

2

100.0

2001

3

3

100.0

Totals

21

21

100.0

OFA Registry Summary by Report Year

AMERICAN WATER SPANIEL

Degenerative myelopathy

AMERICAN WATER SPANIEL

	All cases	Normal	Carrier	At risk
2009	3		3	
			100.0	
2010	3	1	1	1
		33.3	33.3	33.3
Totals	6	1	4	1
		16.7	66.7	16.7