

OFA Registry Summary by Report Year

AIREDALE TERRIER

Percentage of cases where owners have chosen to make all results public after 2001

Clicking these labels will link to the OFA website detail for that data

	Year	Cases	Normal	Abnormal	Excellent	Good	Fair	Borderline	Mild	Moderate	Severe
Hips	1974	13	11	2 15.4		10 76.9	1 7.7		2 15.4		
	1975	12	9	3 25.0	2 16.7	4 33.3	3 25.0		1 8.3	2 16.7	
	1976	49	42	7 14.3	4 8.2	31 63.3	7 14.3		5 10.2	2 4.1	
	1977	39	38	1 2.6	5 12.8	29 74.4	4 10.3		1 2.6		
	1978	52	43	9 17.3	2 3.9	33 63.5	8 15.4		6 11.5	2 3.9	1 1.9
	1979	38	31	7 18.4		25 65.8	6 15.8		4 10.5	2 5.3	1 2.6
	1980	52	48	4 7.7	3 5.8	36 69.2	9 17.3		2 3.9	2 3.9	
	1981	70	59	10 14.3	1 1.4	44 62.9	14 20.0	1 1.4	4 5.7	5 7.1	1 1.4
	1982	67	58	9 13.4	1 1.5	40 59.7	17 25.4		4 6.0	3 4.5	2 3.0
	1983	81	69	12 14.8	1 1.2	50 61.7	18 22.2		8 9.9	4 4.9	
	1984	105	88	16 15.2	5 4.8	63 60.0	20 19.1	1 1.0	4 3.8	10 9.5	2 1.9
	1985	82	67	14 17.1	7 8.5	46 56.1	14 17.1	1 1.2	4 4.9	10 12.2	
	1986	126	103	21 16.7	8 6.4	68 54.0	27 21.4	2 1.6	16 12.7	4 3.2	1 0.8
	1987	151	119	30 19.9	4 2.7	87 57.6	28 18.5	2 1.3	19 12.6	10 6.6	1 0.7
	1988	137	113	24 17.5	9 6.6	73 53.3	31 22.6		11 8.0	13 9.5	
	1989	187	164	22 11.8	20 10.7	105 56.2	39 20.9	1 0.5	14 7.5	6 3.2	2 1.1
	1990	193	164	26 13.5	13 6.7	107 55.4	44 22.8	3 1.6	17 8.8	8 4.2	1 0.5

OFA Registry Summary by Report Year

AIREDALE TERRIER

Percentage of cases where owners have chosen to make all results public after 2001

Clicking these labels will link to the OFA website detail for that data

	Year	Cases	Normal	Abnormal	Excellent	Good	Fair	Borderline	Mild	Moderate	Severe
Hips	1991	174	149	24 13.8	14 8.1	98 56.3	37 21.3	1 0.6	13 7.5	11 6.3	
	1992	203	163	40 19.7	14 6.9	104 51.2	45 22.2		20 9.9	15 7.4	5 2.5
	1993	210	178	28 13.3	13 6.2	124 59.1	41 19.5	4 1.9	15 7.1	12 5.7	1 0.5
	1994	218	190	26 11.9	12 5.5	139 63.8	39 17.9	2 0.9	15 6.9	10 4.6	1 0.5
	1995	202	182	16 7.9	25 12.4	120 59.4	37 18.3	4 2.0	6 3.0	8 4.0	2 1.0
	1996	225	193	27 12.0	17 7.6	119 52.9	57 25.3	5 2.2	14 6.2	10 4.4	3 1.3
	1997	225	189	31 13.8	19 8.4	116 51.6	54 24.0	5 2.2	21 9.3	10 4.4	
	1998	205	181	20 9.8	8 3.9	122 59.5	51 24.9	4 2.0	15 7.3	4 2.0	1 0.5
	1999	232	218	11 4.7	23 9.9	156 67.2	39 16.8	3 1.3	8 3.5	2 0.9	1 0.4
	2000	251 0.4	223	23 9.2	26 10.4	134 53.4	63 25.1	5 2.0	13 5.2	8 3.2	2 0.8
	2001	209 5.7	186	18 8.6	20 9.6	128 61.2	38 18.2	5 2.4	17 8.1	1 0.5	
	2002	242 12.0	221	19 7.9	19 7.9	152 62.8	50 20.7	2 0.8	13 5.4	6 2.5	
	2003	214 8.4	195	14 6.5	16 7.5	143 66.8	36 16.8	5 2.3	12 5.6	2 0.9	
	2004	244 15.6	225	15 6.2	18 7.4	153 62.7	54 22.1	4 1.6	9 3.7	6 2.5	
2005	234 12.8	209	24 10.3	14 6.0	149 63.7	46 19.7	1 0.4	20 8.6	2 0.9	2 0.9	
2006	221 19.0	192	27 12.2	8 3.6	138 62.4	46 20.8	2 0.9	19 8.6	7 3.2	1 0.5	
2007	227 15.0	208	19 8.4	19 8.4	139 61.2	50 22.0		18 7.9	1 0.4		

OFA Registry Summary by Report Year

AIREDALE TERRIER

Percentage of cases where owners have chosen to make all results public after 2001

Clicking these labels will link to the OFA website detail for that data

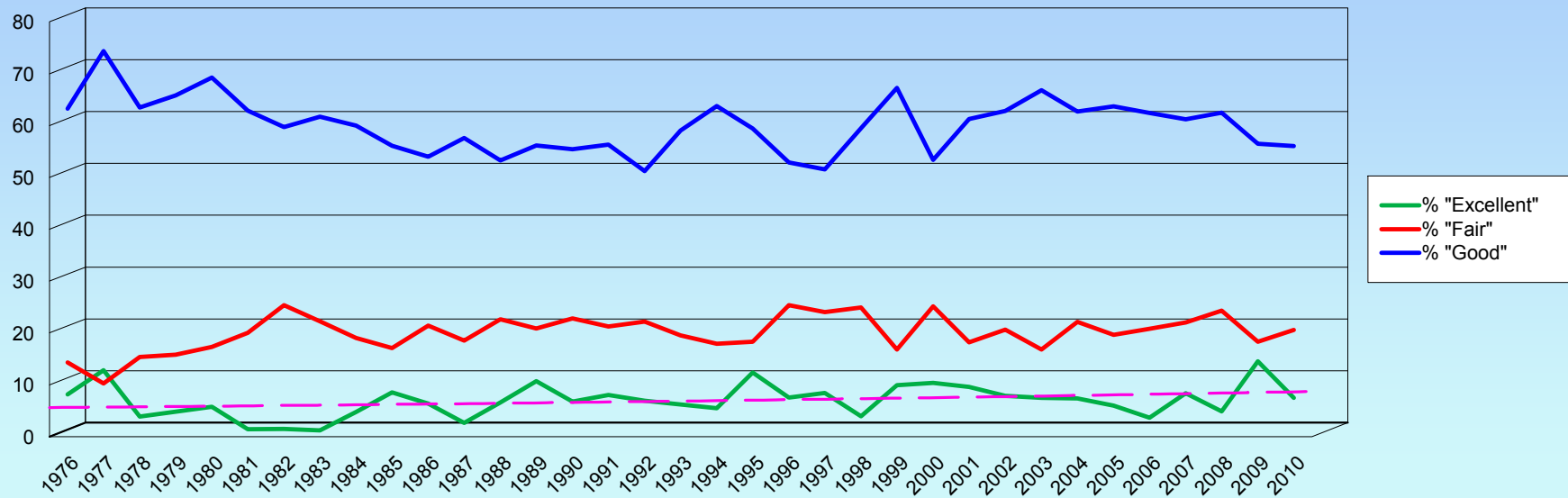
	Year	Cases	Normal	Abnormal	Excellent	Good	Fair	Borderline	Mild	Moderate	Severe
Hips	2008	144 20.1	132	12 8.3	7 4.9	90 62.5	35 24.3		8 5.6	4 2.8	
	2009	131 19.1	117	14 10.7	19 14.5	74 56.5	24 18.3		9 6.9	4 3.1	1 0.8
	2010	107 16.8	90	14 13.1	8 7.5	60 56.1	22 20.6	3 2.8	13 12.2	1 0.9	
	Totals	5572	4867	639 11.5	404 7.3	3309 59.4	1154 20.7	66 1.2	400 7.2	207 3.7	32 0.6

OFA Registry Summary by Report Year

AIREDALE TERRIER

Distribution of normal hip readings by report year

Trend of "Excellent"



OFA Registry Summary by Report Year

AIREDALE TERRIER

YEAR	All Cases	Elbows		AIREDALE TERRIER			
		Normal	Abnormal	Borderline	Grade 1 dysplasia	Grade 2	Grade 3
1991	1	1					
		100.0					
1992	4	4					
		100.0					
1993	1	1					
		100.0					
1994	8	6	2		2		
		75.0	25.0		100.0		
1995	5	5					
		100.0					
1996	3	1	2		2		
		33.3	66.7		100.0		
1997	6	6					
		100.0					
1998	2	2					
		100.0					
1999	8	7	1		1		
		87.5	12.5		100.0		
2000	12	10	2		1	1	
		83.3	16.7		50.0	50.0	
2001	20	16	4		3	1	
		80.0	20.0		75.0	25.0	
2002	13	11	2		2		
		84.6	15.4		100.0		
2003	14	14					
		100.0					
2004	13	12	1			1	
		92.3	7.7			100.0	
2005	29	27	2		1	1	
		93.1	6.9		50.0	50.0	
2006	24	22	2		2		
		91.7	8.3		100.0		
2007	24	22	2		2		
		91.7	8.3		100.0		
2008	24	23	1		1		
		95.8	4.2		100.0		
2009	25	20	5		5		
		80.0	20.0		100.0		
2010	8	7	1		1		
		87.5	12.5		100.0		
Totals	244	217	27		23	4	
		88.9	11.1		85.2	14.8	

OFA Registry Summary by Report Year

AIREDALE TERRIER

Cardiac

AIREDALE TERRIER

Year

All cases

Normal

Abnormal

Equival

2005

3

3
100.0

2008

5

5
100.0

2009

1

1
100.0

2010

1

1
100.0

Totals

10

10
100.0

OFA Registry Summary by Report Year

AIREDALE TERRIER

Year	Thyroid		AIREDALE TERRIER			
	All Cases	Normal	Abnormal	Autoimmune thyroiditis	Idiopathic Hypothyroidism	Equivocal
1997	1	1 100.0				
1998	1	1 100.0				
2000	1					1 100.0
2002	2	2 100.0				
2003	3	2 66.7	1 33.3	1 33.3		
2008	1	1 100.0				
2009	1	1 100.0				
Totals	10	8 80.0	1 10.0	1 10.0		1 10.0

OFA Registry Summary by Report Year

AIREDALE TERRIER

Patella

AIREDALE TERRIER

Year

All Cases

Normal

Abnormal

2005

1

1

2008

1

100.0

1

100.0

Totals

2

2

100.0

OFA Registry Summary by Report Year

AIREDALE TERRIER

Spine

AIREDALE TERRIER

All Cases

Normal

Abnormal

1993

1

1

100.0

1996

1

1

100.0

1999

3

3

100.0

2000

3

3

100.0

2002

1

1

100.0

Totals

9

9

100.0

OFA Registry Summary by Report Year

AIREDALE TERRIER

Degenerative myelopathy

AIREDALE TERRIER

All cases

Normal

Carrier

At risk

2010

1

1

100.0

Totals

1

1

100.0