

OFA Registry Summary by Report Year

AUSTRALIAN SHEPHERD

Percentage of cases where owners have chosen to make all results public after 2001

Clicking these labels will link to the OFA website detail for that data

	Year	Cases	Normal	Abnormal	Excellent	Good	Fair	Borderline	Mild	Moderate	Severe
Hips	1974	52	51	1 1.9	8 15.4	38 73.1	5 9.6		1 1.9		
	1975	106	95	11 10.4	14 13.2	68 64.2	13 12.3		7 6.6	4 3.8	
	1976	182	165	17 9.3	17 9.3	125 68.7	23 12.6		9 5.0	7 3.9	1 0.6
	1977	213	198	15 7.0	34 16.0	146 68.5	18 8.5		7 3.3	6 2.8	2 0.9
	1978	212	190	22 10.4	28 13.2	133 62.7	29 13.7		9 4.3	10 4.7	3 1.4
	1979	214	203	11 5.1	29 13.6	152 71.0	22 10.3		7 3.3	4 1.9	
	1980	278	249	28 10.1	24 8.6	192 69.1	33 11.9	1 0.4	20 7.2	5 1.8	3 1.1
	1981	253	229	21 8.3	18 7.1	183 72.3	28 11.1	3 1.2	10 4.0	10 4.0	1 0.4
	1982	240	217	18 7.5	20 8.3	165 68.8	32 13.3	5 2.1	7 2.9	9 3.8	2 0.8
	1983	259	240	16 6.2	23 8.9	181 69.9	36 13.9	3 1.2	7 2.7	8 3.1	1 0.4
	1984	320	300	17 5.3	24 7.5	240 75.0	36 11.3	3 0.9	9 2.8	6 1.9	2 0.6
	1985	342	316	25 7.3	28 8.2	248 72.5	40 11.7	1 0.3	11 3.2	14 4.1	
	1986	372	343	27 7.3	36 9.7	258 69.4	49 13.2	2 0.5	11 3.0	14 3.8	2 0.5
	1987	379	346	32 8.4	39 10.3	259 68.3	48 12.7	1 0.3	19 5.0	10 2.6	3 0.8
	1988	568	523	44 7.8	84 14.8	368 64.8	71 12.5	1 0.2	26 4.6	16 2.8	2 0.4
	1989	533	489	40 7.5	79 14.8	334 62.7	76 14.3	4 0.8	17 3.2	18 3.4	5 0.9
	1990	624	581	41 6.6	76 12.2	424 68.0	81 13.0	2 0.3	21 3.4	18 2.9	2 0.3

OFA Registry Summary by Report Year

AUSTRALIAN SHEPHERD

Percentage of cases where owners have chosen to make all results public after 2001

Clicking these labels will link to the OFA website detail for that data

	Year	Cases	Normal	Abnormal	Excellent	Good	Fair	Borderline	Mild	Moderate	Severe
Hips	1991	730	670	53 7.3	106 14.5	483 66.2	81 11.1	7 1.0	31 4.3	16 2.2	6 0.8
	1992	805	762	37 4.6	87 10.8	563 69.9	112 13.9	6 0.8	18 2.2	17 2.1	2 0.3
	1993	962	913	42 4.4	107 11.1	694 72.1	112 11.6	7 0.7	23 2.4	12 1.3	7 0.7
	1994	933	885	42 4.5	123 13.2	676 72.5	86 9.2	6 0.6	26 2.8	13 1.4	3 0.3
	1995	1064	999	55 5.2	160 15.0	734 69.0	105 9.9	10 0.9	29 2.7	24 2.3	2 0.2
	1996	1193	1124	63 5.3	155 13.0	837 70.2	132 11.1	6 0.5	28 2.4	30 2.5	5 0.4
	1997	1247	1151	84 6.7	189 15.2	799 64.1	163 13.1	12 1.0	48 3.9	33 2.7	3 0.2
	1998	1318	1224	78 5.9	199 15.1	813 61.7	212 16.1	16 1.2	48 3.6	24 1.8	6 0.5
	1999	1389 0.1	1290	91 6.6	265 19.1	894 64.4	131 9.4	8 0.6	56 4.0	34 2.5	1 0.1
	2000	1406 0.1	1334	64 4.6	305 21.7	904 64.3	125 8.9	8 0.6	42 3.0	20 1.4	2 0.1
	2001	1247 10.1	1149	83 6.7	250 20.1	761 61.0	138 11.1	15 1.2	52 4.2	27 2.2	4 0.3
	2002	1404 19.4	1328	63 4.5	251 17.9	934 66.5	143 10.2	13 0.9	47 3.4	15 1.1	1 0.1
	2003	1244 15.2	1196	44 3.5	204 16.4	886 71.2	106 8.5	4 0.3	29 2.3	13 1.1	2 0.2
	2004	1413 20.4	1337	65 4.6	240 17.0	963 68.2	134 9.5	11 0.8	38 2.7	21 1.5	6 0.4
2005	1495 22.8	1398	90 6.0	247 16.5	1008 67.4	143 9.6	7 0.5	63 4.2	26 1.7	1 0.1	
2006	1294 24.4	1226	63 4.9	229 17.7	849 65.6	148 11.4	5 0.4	49 3.8	13 1.0	1 0.1	
2007	1328 20.8	1241	79 6.0	229 17.2	872 65.7	140 10.5	8 0.6	57 4.3	20 1.5	2 0.2	

OFA Registry Summary by Report Year

AUSTRALIAN SHEPHERD

Percentage of cases where owners have chosen to make all results public after 2001

Clicking these labels will link to the OFA website detail for that data

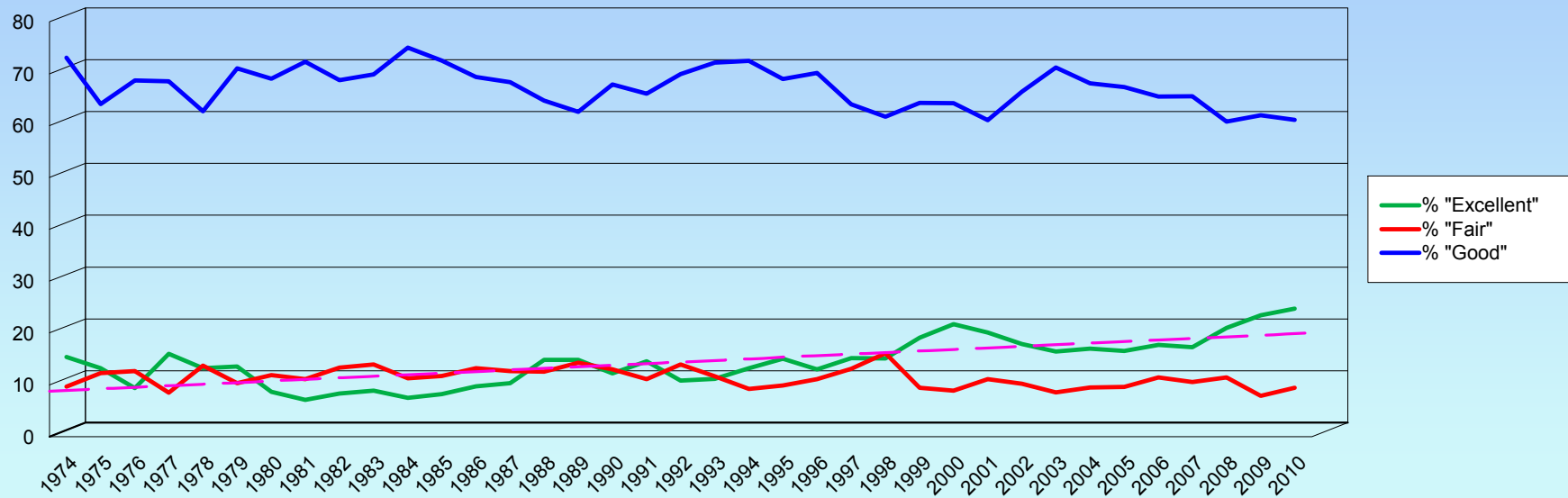
	Year	Cases	Normal	Abnormal	Excellent	Good	Fair	Borderline	Mild	Moderate	Severe
Hips	2008	1304 23.1	1214	87 6.7	273 20.9	792 60.7	149 11.4	3 0.2	57 4.4	22 1.7	8 0.6
	2009	1179 22.6	1100	70 5.9	276 23.4	731 62.0	93 7.9	9 0.8	41 3.5	22 1.9	7 0.6
	2010	936 23.8	891	39 4.2	231 24.7	572 61.1	88 9.4	6 0.6	30 3.2	9 1.0	
	Totals	29038	27167	1678 5.8	4707 16.2	19279 66.4	3181 11.0	193 0.7	1010 3.5	570 2.0	98 0.3

OFA Registry Summary by Report Year

AUSTRALIAN SHEPHERD

Distribution of normal hip readings by report year

Trend of "Excellent"



OFA Registry Summary by Report Year

AUSTRALIAN SHEPHERD

YEAR	All Cases	Elbows AUSTRALIAN SHEPHERD					
		Normal	Abnormal	Borderline	Grade 1 dysplasia	Grade 2	Grade 3
1990	5	5					
		100.0					
1992	2	2					
		100.0					
1993	7	7					
		100.0					
1994	18	18					
		100.0					
1995	19	17	2		1		
		89.5	10.5		50.0		
1996	62	58	3	1	2		
		93.6	4.8	1.6	66.7		
1997	66	63	1	2	1		
		95.5	1.5	3.0	100.0		
1998	79	73	4	2	3		
		92.4	5.1	2.5	75.0		
1999	121	114	7		6		
		94.2	5.8		85.7		
2000	138	130	8		8		
		94.2	5.8		100.0		
2001	177	168	9		7		
		94.9	5.1		77.8		
2002	215	201	12	2	8		
		93.5	5.6	0.9	66.7		
2003	242	235	7		3		
		97.1	2.9		42.9		
2004	364	351	12	1	8		
		96.4	3.3	0.3	66.7		
2005	462	440	21	1	17		
		95.2	4.6	0.2	81.0		
2006	432	414	18		17		
		95.8	4.2		94.4		
2007	565	540	25		20		
		95.6	4.4		80.0		
2008	610	592	18		12		
		97.1	3.0		66.7		
2009	572	540	31	1	28		
		94.4	5.4	0.2	90.3		
2010	498	478	20		16		
		96.0	4.0		80.0		
Totals	4654	4446	198	10	157	38	3
		95.5	4.3	0.2	79.3	19.2	1.5

OFA Registry Summary by Report Year

AUSTRALIAN SHEPHERD

Cardiac

AUSTRALIAN SHEPHERD

Year	All cases	Normal	Abnormal	Equival
1996	4	4 100.0		
1997	21	21 100.0		
1998	7	7 100.0		
1999	10	10 100.0		
2000	9	9 100.0		
2001	17	17 100.0		
2002	11	11 100.0		
2003	15	15 100.0		
2004	18	18 100.0		
2005	26	25 96.2	1 3.9	
2006	17	17 100.0		
2007	23	23 100.0		
2008	24	24 100.0		
2009	39	36 92.3		3 7.7
2010	21	21 100.0		

OFA Registry Summary by Report Year

AUSTRALIAN SHEPHERD

Totals	262	258 98.5	1 0.4	3 1.2
--------	-----	-------------	----------	----------

OFA Registry Summary by Report Year

AUSTRALIAN SHEPHERD

Year	Thyroid		AUSTRALIAN SHEPHERD			
	All Cases	Normal	Abnormal	Autoimmune thyroiditis	Idiopathic Hypothyroidism	Equivocal
1996	1	1				
		100.0				
1999	2	1				1
		50.0				50.0
2000	1					1
						100.0
2001	2	2				
		100.0				
2002	21	21				
		100.0				
2003	9	8	1	1		
		88.9	11.1	11.1		
2004	18	17	1	1		
		94.4	5.6	5.6		
2005	24	23				1
		95.8				4.2
2006	18	16				2
		88.9				11.1
2007	19	18	1	1		
		94.7	5.3	5.3		
2008	16	15				1
		93.8				6.3
2009	19	17	1	1		1
		89.5	5.3	5.3		5.3
2010	9	9				
		100.0				
Totals	159	148	4	4		7
		93.1	2.5	2.5		4.4

OFA Registry Summary by Report Year

AUSTRALIAN SHEPHERD

Patella

AUSTRALIAN SHEPHERD

Year All Cases Normal Abnormal

1995	1	1	
1996	5	5	
1997	21	21	
1998	8	7	1
1999	9	9	
2000	10	9	1
2001	16	16	
2002	16	15	1
2003	29	29	
2004	31	31	
2005	51	51	
2006	17	16	1
2007	29	29	
2008	32	32	
2009	49	47	2
2010	22	22	
Totals	346	340	6
		98.3	1.7

OFA Registry Summary by Report Year

AUSTRALIAN SHEPHERD

Year	DNA PRA	AUSTRALIAN SHEPHERD		Carrier
	All Cases	Normal	Abnormal	
2007	3	3 100.0		
2010	1	1 100.0		
Totals	4	4 100.0		

OFA Registry Summary by Report Year

AUSTRALIAN SHEPHERD

Baer Hearing

AUSTRALIAN SHEPHERD

Year

All Cases

Normal

Abnormal

2003

1

1

100.0

Totals

1

1

100.0

OFA Registry Summary by Report Year

AUSTRALIAN SHEPHERD

Spine

AUSTRALIAN SHEPHERD

All Cases

Normal

Abnormal

1991	1		1
1992	1		100.0 1
1993	12		100.0 12
1994	31		100.0 31
1995	38		100.0 38
1996	48		100.0 48
1997	40		100.0 40
1998	36		100.0 36
1999	47		100.0 47
2000	32		100.0 32
2001	33		100.0 33
2002	3		100.0 3

Totals

322

322

100.0

OFA Registry Summary by Report Year

AUSTRALIAN SHEPHERD

Exercise Induced Collapse

AUSTRALIAN SHEPHERD

Year	All cases	Normal	Carrier	At risk
------	-----------	--------	---------	---------

2008

2009

1

1
100.0

2010

Totals	1	1 100.0		
---------------	---	------------	--	--

OFA Registry Summary by Report Year

AUSTRALIAN SHEPHERD

Degenerative myelopathy

AUSTRALIAN SHEPHERD

	All cases	Normal	Carrier	At risk
2009	3	1 33.3	2 66.7	
2010	4	1 25.0	1 25.0	2 50.0
Totals	7	2 28.6	3 42.9	2 28.6