

OFA Registry Summary by Report Year

ALASKAN MALAMUTE

Percentage of cases where owners have chosen to make all results public after 2001

Clicking these labels will link to the OFA website detail for that data

	Year	Cases	Normal	Abnormal	Excellent	Good	Fair	Borderline	Mild	Moderate	Severe
Hips	1974	235	194	41 17.5	24 10.2	129 54.9	41 17.5		25 10.6	11 4.7	5 2.1
	1975	327	271	55 16.8	32 9.8	187 57.2	52 15.9	1 0.3	39 11.9	16 4.9	
	1976	392	339	53 13.5	41 10.5	231 58.9	67 17.1		35 8.9	18 4.6	
	1977	354	305	49 13.8	46 13.0	217 61.3	42 11.9		27 7.6	22 6.2	
	1978	385	333	51 13.3	42 10.9	251 65.2	40 10.4	1 0.3	29 7.5	19 4.9	3 0.8
	1979	361	318	41 11.4	33 9.1	239 66.2	46 12.7	2 0.6	25 6.9	14 3.9	2 0.6
	1980	396	341	51 12.9	41 10.4	253 63.9	47 11.9	4 1.0	23 5.8	27 6.8	1 0.3
	1981	391	320	66 16.9	37 9.5	250 63.9	33 8.4	5 1.3	44 11.3	22 5.6	
	1982	373	321	42 11.3	36 9.7	240 64.3	45 12.1	10 2.7	28 7.5	14 3.8	
	1983	371	316	52 14.0	35 9.4	228 61.5	53 14.3	3 0.8	30 8.1	18 4.9	4 1.1
	1984	398	356	39 9.8	40 10.1	267 67.1	49 12.3	3 0.8	15 3.8	23 5.8	1 0.3
	1985	353	311	39 11.1	60 17.0	210 59.5	41 11.6	3 0.9	16 4.5	20 5.7	3 0.9
	1986	390	335	52 13.3	77 19.7	210 53.9	48 12.3	3 0.8	29 7.4	21 5.4	2 0.5
	1987	432	381	49 11.3	58 13.4	273 63.2	50 11.6	2 0.5	26 6.0	23 5.3	
	1988	432	362	66 15.3	83 19.2	231 53.5	48 11.1	4 0.9	36 8.3	26 6.0	4 0.9
	1989	407	359	45 11.1	87 21.4	220 54.1	52 12.8	3 0.7	29 7.1	16 3.9	
1990	427	372	49 11.5	86 20.1	235 55.0	51 11.9	6 1.4	32 7.5	13 3.0	4 0.9	

OFA Registry Summary by Report Year

ALASKAN MALAMUTE

Percentage of cases where owners have chosen to make all results public after 2001

Clicking these labels will link to the OFA website detail for that data

	Year	Cases	Normal	Abnormal	Excellent	Good	Fair	Borderline	Mild	Moderate	Severe
Hips	1991	463	406	54 11.7	83 17.9	260 56.2	63 13.6	3 0.7	35 7.6	16 3.5	3 0.7
	1992	499	427	67 13.4	65 13.0	301 60.3	61 12.2	5 1.0	41 8.2	25 5.0	1 0.2
	1993	414	372	40 9.7	74 17.9	244 58.9	54 13.0	2 0.5	19 4.6	20 4.8	1 0.2
	1994	492	432	51 10.4	98 19.9	288 58.5	46 9.4	9 1.8	31 6.3	17 3.5	3 0.6
	1995	467	403	58 12.4	73 15.6	278 59.5	52 11.1	6 1.3	37 7.9	19 4.1	2 0.4
	1996	428	378	42 9.8	77 18.0	255 59.6	46 10.8	8 1.9	29 6.8	13 3.0	
	1997	403	362	34 8.4	71 17.6	226 56.1	65 16.1	7 1.7	24 6.0	10 2.5	
	1998	368	322	38 10.3	58 15.8	208 56.5	56 15.2	8 2.2	22 6.0	15 4.1	1 0.3
	1999	403 0.2	352	46 11.4	86 21.3	219 54.3	47 11.7	5 1.2	34 8.4	10 2.5	2 0.5
	2000	337 0.3	307	29 8.6	99 29.4	174 51.6	34 10.1	1 0.3	20 5.9	5 1.5	4 1.2
	2001	287 12.9	258	26 9.1	69 24.0	161 56.1	28 9.8	3 1.1	20 7.0	4 1.4	2 0.7
	2002	366 17.8	337	26 7.1	83 22.7	215 58.7	39 10.7	3 0.8	16 4.4	10 2.7	
	2003	292 12.3	268	21 7.2	64 21.9	174 59.6	30 10.3	3 1.0	14 4.8	7 2.4	
	2004	262 13.4	245	16 6.1	62 23.7	148 56.5	35 13.4	1 0.4	10 3.8	4 1.5	2 0.8
2005	265 23.4	244	21 7.9	56 21.1	166 62.6	22 8.3		16 6.0	5 1.9		
2006	283 17.7	252	30 10.6	59 20.9	174 61.5	19 6.7	1 0.4	21 7.4	8 2.8	1 0.4	
2007	267 17.2	228	37 13.9	46 17.2	158 59.2	24 9.0	2 0.8	32 12.0	5 1.9		

OFA Registry Summary by Report Year

ALASKAN MALAMUTE

Percentage of cases where owners have chosen to make all results public after 2001

Clicking these labels will link to the OFA website detail for that data

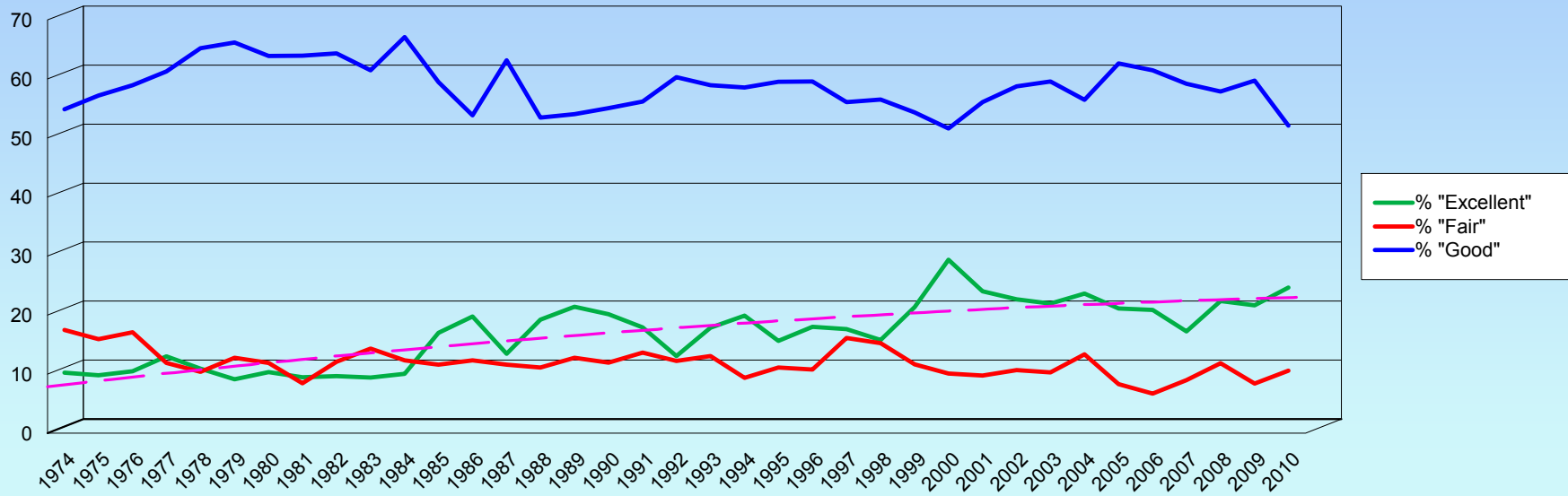
	Year	Cases	Normal	Abnormal	Excellent	Good	Fair	Borderline	Mild	Moderate	Severe
Hips	2008	228 20.6	210	16 7.0	51 22.4	132 57.9	27 11.8	2 0.9	12 5.3	4 1.8	
	2009	263 17.9	236	23 8.8	57 21.7	157 59.7	22 8.4	4 1.5	14 5.3	7 2.7	2 0.8
	2010	142 13.4	124	18 12.7	35 24.7	74 52.1	15 10.6		13 9.2	5 3.5	
Totals		13353	11697	1533 11.5	2224 16.7	7883 59.0	1590 11.9	123 0.9	948 7.1	532 4.0	53 0.4

OFA Registry Summary by Report Year

ALASKAN MALAMUTE

Distribution of normal hip readings by report year

Trend of "Excellent"



OFA Registry Summary by Report Year

ALASKAN MALAMUTE

YEAR	All Cases	Elbows ALASKAN MALAMUTE					
		Normal	Abnormal	Borderline	Grade 1 dysplasia	Grade 2	Grade 3
1990	5	5					
		100.0					
1991	5	5					
		100.0					
1992	4	3	1		1		
		75.0	25.0		100.0		
1993	6	5	1			1	
		83.3	16.7			100.0	
1994	8	8					
		100.0					
1995	9	9					
		100.0					
1996	22	20	2			1	1
		90.9	9.1			50.0	50.0
1997	14	14					
		100.0					
1998	20	20					
		100.0					
1999	27	24	3		3		
		88.9	11.1		100.0		
2000	21	21					
		100.0					
2001	44	44					
		100.0					
2002	34	33	1			1	
		97.1	2.9			100.0	
2003	36	34	2		2		
		94.4	5.6		100.0		
2004	30	29	1				1
		96.7	3.3				100.0
2005	39	38	1			1	
		97.4	2.6			100.0	
2006	52	51	1		1		
		98.1	1.9		100.0		
2007	45	43	2		2		
		95.6	4.4		100.0		
2008	68	66	2		2		
		97.1	2.9		100.0		
2009	79	78	1		1		
		98.7	1.3		100.0		
2010	42	42					
		100.0					
Totals	610	592	18		12	4	2
		97.1	3.0		66.7	22.2	11.1

OFA Registry Summary by Report Year

ALASKAN MALAMUTE

Year	Cardiac	ALASKAN MALAMUTE			
		All cases	Normal	Abnormal	Equival
2002		2	2 100.0		
2003		1	1 100.0		
2005		1	1 100.0		
2007		10	10 100.0		
2008		26	26 100.0		
2009		51	48 94.1	3 5.9	
2010		36	36 100.0		
Totals		127	124 97.6	3 2.4	

OFA Registry Summary by Report Year

ALASKAN MALAMUTE

Year	Thyroid		ALASKAN MALAMUTE			
	All Cases	Normal	Abnormal	Autoimmune thyroiditis	Idiopathic Hypothyroidism	Equivocal
1998	1	1				
		100.0				
1999	6	3				3
		50.0				50.0
2001	7	6				1
		85.7				14.3
2002	1	1				
		100.0				
2003	1	1				
		100.0				
2004	10	7	1	1		2
		70.0	10.0	10.0		20.0
2005	8	7				1
		87.5				12.5
2006	25	21	1	1		3
		84.0	4.0	4.0		12.0
2007	19	14	1	1		4
		73.7	5.3	5.3		21.1
2008	19	16				3
		84.2				15.8
2009	23	18				5
		78.3				21.7
2010	11	10				1
		90.9				9.1
Totals	131	105	3	3		23
		80.2	2.3	2.3		17.6

OFA Registry Summary by Report Year

ALASKAN MALAMUTE

Patella

ALASKAN MALAMUTE

Year	All Cases	Normal	Abnormal
1996	2	2	
		100.0	
2000	2	2	
		100.0	
2001	5	5	
		100.0	
2009	1	1	
		100.0	
2010	13	12	1
		92.3	7.7
Totals	23	22	1
		95.7	4.4

OFA Registry Summary by Report Year

ALASKAN MALAMUTE

Spine

ALASKAN MALAMUTE

All Cases

Normal

Abnormal

1991	2		2
1993	1		100.0 1
1994	9		100.0 9
1995	16		100.0 16
1996	6		100.0 6
1997	18		100.0 18
1998	14		100.0 14
1999	20		100.0 20
2000	9		100.0 9
2001	8		100.0 8
Totals	103		103 100.0

OFA Registry Summary by Report Year

ALASKAN MALAMUTE

Degenerative myelopathy

ALASKAN MALAMUTE

	All cases	Normal	Carrier	At risk
2009	2	1		1
		50.0		50.0
Totals	2	1		1
		50.0		50.0