

OFA Registry Summary by Report Year

AFFENPINSCHER

Percentage of cases where owners have chosen to make all results public after 2001

Clicking these labels will link to the OFA website detail for that data

	Year	Cases	Normal	Abnormal	Excellent	Good	Fair	Borderline	Mild	Moderate	Severe
Hips	1987	1	1			100.0					
	1991	2	2			50.0	50.0				
	1993	4	4			75.0	25.0				
	1994	4	3	1		75.0			25.0		
	1995	4	4			75.0	25.0				
	1996	6	3	2	1	16.7	16.7	16.7	16.7	16.7	
	1997	10	9	1		70.0	20.0				10.0
	1998	8	7	1		75.0	12.5			12.5	
	1999	13	11	2		69.2	15.4			7.7	7.7
	2000	5	5		1	20.0	60.0	20.0			
	2001	10	10				80.0	20.0			
	2002	15 20.0	13	1			66.7	20.0	6.7		6.7
	2003	24 16.7	22	1	3		62.5	16.7	4.2	4.2	
	2004	9 11.1	6	3			55.6	11.1		22.2	11.1
	2005	21 19.0	17	4			61.9	19.1		4.8	9.5
2006	32 6.3	25	7			65.6	12.5		15.6		6.3
2007	28 10.7	19	9	1		46.4	17.9		21.4	10.7	

OFA Registry Summary by Report Year

AFFENPINSCHER

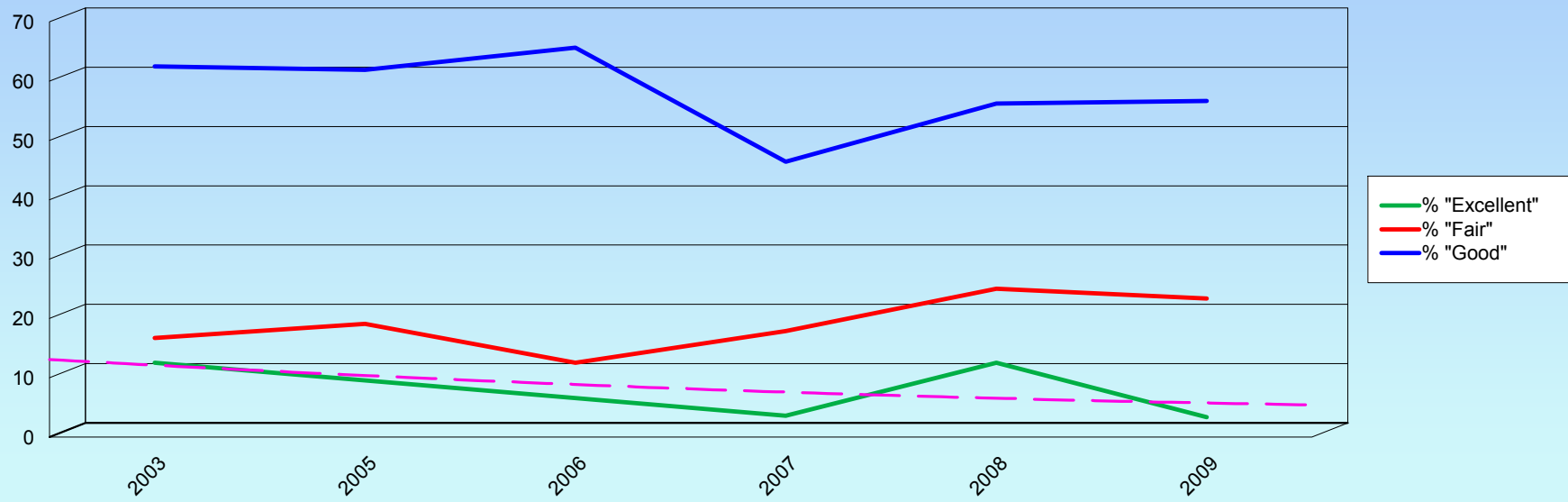
Percentage of cases where owners have chosen to make all results public after 2001

Clicking these labels will link to the OFA website detail for that data

	Year	Cases	Normal	Abnormal	Excellent	Good	Fair	Borderline	Mild	Moderate	Severe
Hips	2008	16 25.0	15	1 6.3	2 12.5	9 56.3	4 25.0			1 6.3	
	2009	30 23.3	25	5 16.7	1 3.3	17 56.7	7 23.3		4 13.3	1 3.3	
	2010	12 8.3	10	2 16.7	1 8.3	5 41.7	4 33.3		1 8.3	1 8.3	
	Totals	254	211	40 15.8	10 3.9	153 60.2	48 18.9	3 1.2	23 9.1	12 4.7	5 2.0

Distribution of normal hip readings by report year

Trend of "Excellent"



OFA Registry Summary by Report Year

AFFENPINSCHER

YEAR	All Cases	Elbows AFFENPINSCHER					
		Normal	Abnormal	Borderline	Grade 1 dysplasia	Grade 2	Grade 3
1996	1	1					
		100.0					
2002	3	2	1		1		
		66.7	33.3		100.0		
2003	4	4					
		100.0					
2004	1	1					
		100.0					
2005	5	5					
		100.0					
2006	7	7					
		100.0					
2007	2	2					
		100.0					
2008	2	2					
		100.0					
2009	7	7					
		100.0					
2010	6	5	1		1		
		83.3	16.7		100.0		
Totals	38	36	2		2		
		94.7	5.3		100.0		

OFA Registry Summary by Report Year

AFFENPINSCHER

Year	Cardiac	AFFENPINSCHER			
		All cases	Normal	Abnormal	Equival
1997		1	1 100.0		
2003		1	1 100.0		
2005		1	1 100.0		
2007		1	1 100.0		
2008		4	4 100.0		
2009		5	5 100.0		
2010		6	5 83.3		1 16.7
Totals		19	18 94.7		1 5.3

OFA Registry Summary by Report Year

AFFENPINSCHER

Year	Thyroid		AFFENPINSCHER			
	All Cases	Normal	Abnormal	Autoimmune thyroiditis	Idiopathic Hypothyroidism	Equivocal
2008	2	2				
		100.0				
2009	1	1				
		100.0				
2010	1	1				
		100.0				
Totals	4	4				
		100.0				

OFA Registry Summary by Report Year

AFFENPINSCHER

Patella

AFFENPINSCHER

Year All Cases Normal Abnormal

1994	2	2	
1995	1	100.0	
1996	1	100.0	
1997	7	85.7	14.3
1998	4	75.0	25.0
1999	8	87.5	12.5
2000	2	100.0	
2001	7	100.0	
2002	5	100.0	
2003	18	100.0	
2004	7	100.0	
2005	17	100.0	
2006	25	96.0	4.0
2007	16	93.8	6.3
2008	12	91.7	8.3
2009	28	100.0	
2010	7	100.0	

Totals

167

161

6

96.4

3.6

OFA Registry Summary by Report Year

AFFENPINSCHER

OFA Registry Summary by Report Year

AFFENPINSCHER

Year	Sebaceous Adentis		AFFENPINSCHER		
	All Cases	Normal	Abnormal	Equivalcal	Sub Clinical
2007	1	1 100.0			
Totals	1	1 100.0			

OFA Registry Summary by Report Year

AFFENPINSCHER

Legg-Calve-Perthes			AFFENPINSCHER	
Year	All Cases	Normal	Abnormal	LPQHIP
2003	8	8		
		100		
2004	4	4		
		100		
2005	46	46		
		100		
2006	16	16		
		100		
2007	13	13		
		100		
2008	8	8		
		100		
2009	4	4		
		100		
2010	4	4		
		100		
Totals	103	103		
		100		

OFA Registry Summary by Report Year

AFFENPINSCHER

Spine

AFFENPINSCHER

	All Cases	Normal	Abnormal
1999	1		1
			100.0
Totals	1		1
			100.0

OFA Registry Summary by Report Year

AFFENPINSCHER

Degenerative myelopathy

AFFENPINSCHER

All cases

Normal

Carrier

At risk

2010

1

1

100.0

Totals

1

1

100.0