

OFA Registry Summary by Report Year

ARGENTINE DOGO

Percentage of cases where owners have chosen to make all results public after 2001

Clicking these labels will link to the OFA website detail for that data

	Year	Cases	Normal	Abnormal	Excellent	Good	Fair	Borderline	Mild	Moderate	Severe
Hips	1990	2	1	1 50.0		1 50.0			1 50.0		
	1991	2	1	1 50.0	1 50.0				1 50.0		
	1992	11	8	3 27.3		5 45.5	3 27.3		1 9.1	2 18.2	
	1993	7	6	1 14.3		4 57.1	2 28.6			1 14.3	
	1994	17	12	5 29.4	2 11.8	6 35.3	4 23.5		4 23.5	1 5.9	
	1995	7	5	2 28.6		2 28.6	3 42.9		2 28.6		
	1996	5	3	2 40.0		2 40.0	1 20.0		2 40.0		
	1997	6	4	2 33.3		2 33.3	2 33.3		1 16.7	1 16.7	
	1998	18	13	5 27.8		9 50.0	4 22.2		3 16.7	1 5.6	1 5.6
	1999	4	3	1 25.0	1 25.0	2 50.0					1 25.0
	2000	6	3	3 50.0		1 16.7	2 33.3		2 33.3		1 16.7
	2001	7	3	3 42.9		1 14.3	2 28.6	1 14.3	2 28.6	1 14.3	
	2002	2	2				2 100.0				
	2003	8	5	3 37.5		3 37.5	2 25.0		3 37.5		
	2004	7	1	6 85.7		1 14.3			3 42.9	2 28.6	1 14.3
	2005	11	4	7 63.6		2 18.2	2 18.2		5 45.5	1 9.1	1 9.1
	2006	8	5	3 37.5	1 12.5	2 25.0	2 25.0		2 25.0	1 12.5	

OFA Registry Summary by Report Year

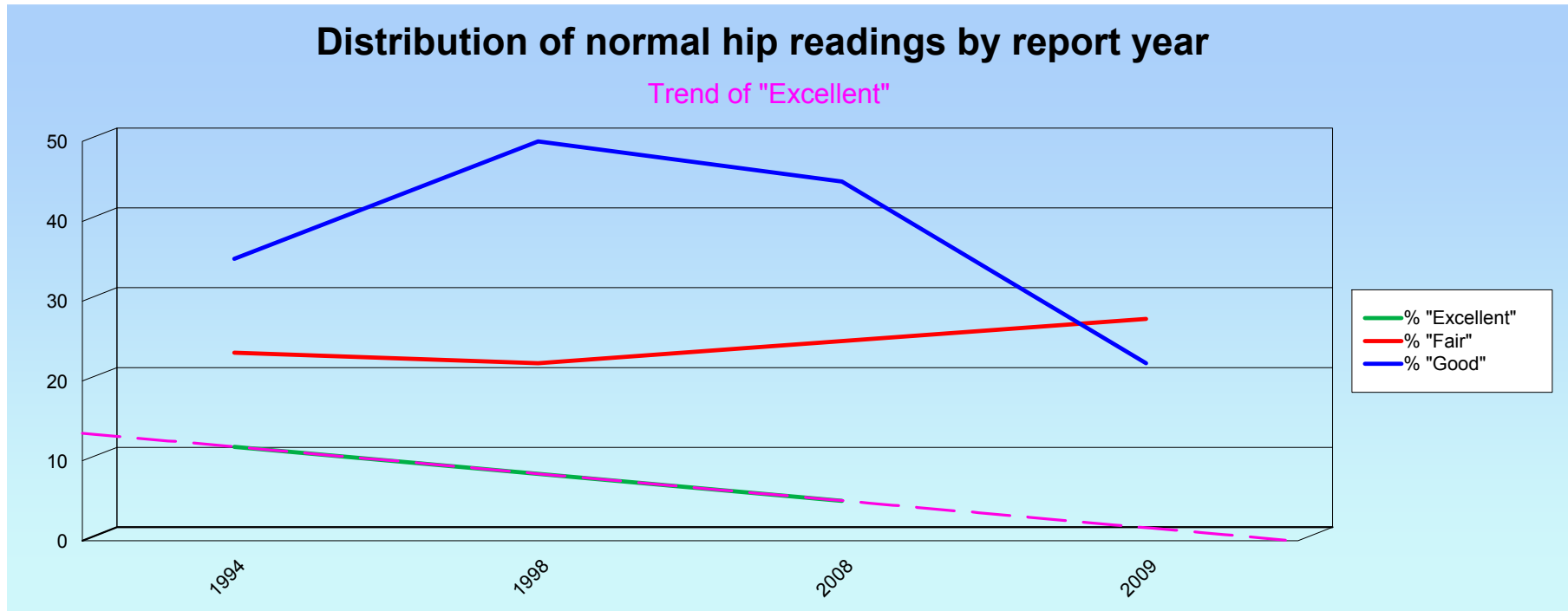
ARGENTINE DOGO

Percentage of cases where owners have chosen to make all results public after 2001

Clicking these labels will link to the OFA website detail for that data

	Year	Cases	Normal	Abnormal	Excellent	Good	Fair	Borderline	Mild	Moderate	Severe
Hips	2007	12 25.0	4	8 66.7		3 25.0	1 8.3		7 58.3	1 8.3	
	2008	20 5.0	15	5 25.0	1 5.0	9 45.0	5 25.0		5 25.0		
	2009	18 11.1	9	9 50.0		4 22.2	5 27.8		7 38.9	1 5.6	1 5.6
	2010	9 11.1	2	7 77.8		2 22.2			4 44.4	2 22.2	1 11.1
	Totals	187	109	77 41.2	6 3.2	61 32.6	42 22.5	1 0.5	55 29.4	15 8.0	7 3.7

ARGENTINE DOGO



OFA Registry Summary by Report Year

ARGENTINE DOGO

YEAR	All Cases	Elbows ARGENTINE DOGO					
		<i>Normal</i>	<i>Abnormal</i>	Borderline	Grade 1 dysplasia	Grade 2	Grade 3
1995	1	1					
		100.0					
1998	2	2					
		100.0					
2003	1	1					
		100.0					
2004	2	2					
		100.0					
2005	6	6					
		100.0					
2006	4	4					
		100.0					
2007	4	4					
		100.0					
2008	6	6					
		100.0					
2009	8	8					
		100.0					
2010	4	4					
		100.0					
Totals	38	38					
		100.0					

OFA Registry Summary by Report Year

ARGENTINE DOGO

Cardiac

ARGENTINE DOGO

Year

All cases

Normal

Abnormal

Equival

1998	2	2 100.0		
2004	1	1 100.0		
2005	2	2 100.0		
2006	7	7 100.0		
2007	9	9 100.0		
2008	3	3 100.0		
2009	5	5 100.0		
Totals	29	29 100.0		

OFA Registry Summary by Report Year

ARGENTINE DOGO

Year	Thyroid		ARGENTINE DOGO			
	All Cases	Normal	Abnormal	Autoimmune thyroiditis	Idiopathic Hypothyroidism	Equivocal
2003	1	1				
		100.0				
2006	3	3				
		100.0				
2007	2	2				
		100.0				
Totals	6	6				
		100.0				

OFA Registry Summary by Report Year

ARGENTINE DOGO

Patella

ARGENTINE DOGO

Year

All Cases

Normal

Abnormal

2006

3

3

2007

7

100.0

7

2008

4

100.0

4

2009

2

100.0

2

100.0

Totals

16

16

100.0

OFA Registry Summary by Report Year

ARGENTINE DOGO

Year	Sebaceous Adentis		ARGENTINE DOGO		
	All Cases	Normal	Abnormal	Equival	Sub Clinical
2007	1			1	
				100.0	
Totals	1			1	
				100.0	

OFA Registry Summary by Report Year

ARGENTINE DOGO

Legg-Calve-Perthes			ARGENTINE DOGO	
Year	All Cases	Normal	Abnormal	LPQHIP
2006	1	1		
		100		
Totals	1	1		
		100		

OFA Registry Summary by Report Year

ARGENTINE DOGO

Baer Hearing

ARGENTINE DOGO

Year

All Cases

Normal

Abnormal

2004

13

11

2

84.6

15.4

2006

12

12

100.0

2009

1

1

100.0

Totals

26

24

2

92.3

7.7

OFA Registry Summary by Report Year

ARGENTINE DOGO

Spine

ARGENTINE DOGO

All Cases

Normal

Abnormal

1994

3

3

100.0

1998

2

2

100.0

2000

1

1

100.0

Totals

6

6

100.0